



WICHITA STATE
UNIVERSITY

W. FRANK BARTON
SCHOOL OF BUSINESS

Center for Economic Development
and Business Research

Wichita Metro Area Current Conditions Index Results for August 2011

Introduction

The WSU Current Conditions Index is designed to give an indication of the present condition of the Wichita metropolitan area economy. The WSU Current Conditions Index is composed of six monthly indicators including:

- Number of monthly home sales
- Hotel occupancy rate
- Number of outbound airline passengers
- Volume of outbound airfreight
- Number of wage and salary employed
- Civilian unemployment rate

The WSU Current Conditions Index is designed to reflect the present state of the economy. The WSU Leading Economic Indicators Index, on the other hand, is designed to forecast future movements in the economy. On the national level, The Conference Board releases the most widely followed indicators. The WSU Current Conditions Index is similar to what The Conference Board refers to as their “coincident” indicators index.

Summary of Results¹

Month to Month Comparison: July 2011 to August 2011

- WSU Current Conditions Index decreased 0.3 percent
- Home sales increased 0.8 percent
- Hotel occupancy rate decreased 6.2 percentage points
- Number of outbound airline passengers decreased 9.9 percent
- Outbound airfreight shipments at the airport increased 3.3 percent
- Wage and salary employment increased 0.1 percent
- Unemployment rate increased 0.2 percentage points

Year-Over-Year Monthly Comparison: August 2010 to August 2011

- WSU Current Conditions Index increased 0.3 percent
- Home sales increased 37.8 percent
- Hotel occupancy rate decreased 0.4 percentage points
- Number of outbound airline passengers decreased 1.1 percent
- Outbound airfreight shipments at the airport decreased 11 percent
- Wage and salary employment increased 0.5 percent
- Unemployment rate decreased 0.5 percentage points

Year-to-Year Comparison: August 2010 to August 2011

(12 months ending August 2010 compared to the 12 months ending August 2011)

- WSU Current Conditions Index decreased 0.3 percent
- Home sales decreased 13.5 percent
- Hotel occupancy rate increased 3.9 percentage points
- Number of outbound airline passengers increased 1.7 percent
- Outbound airfreight shipments decreased 3.3 percent
- Wage and salary employment decreased 0.2 percent
- Unemployment rate decreased 0.8 percentage points

¹ Unless noted otherwise, all data discussed in the summary of results are seasonally adjusted.

Table 1. Current Conditions Index for the 13 Months Ending August 2011

Month	Year	Index	Percentage Change
August	2010	87.54	-1.3%
September	2010	87.73	0.2%
October	2010	87.00	-0.8%
November	2010	86.05	-1.1%
December	2010	85.46	-0.7%
January	2011	86.13	0.8%
February	2011	86.73	0.7%
March	2011	86.74	0.0%
April	2011	87.28	0.6%
May	2011	87.82	0.6%
June	2011	88.01	0.2%
July	2011	88.07	0.1%
August	2011	87.79	-0.3%

Table 2. Current Indicators (seasonally adjusted)*

Month	Year	Number of Home Sales	Hotel Occupancy Rate (%)	Number of Outbound Airline Passengers	Outbound Airfreight Shipments in Pounds	Number of Wage & Salary Employed	Unemployment Rate (%)
August	2010	450	55.0	62,750	1,948,835	284,042	8.7
September	2010	609	61.6	69,814	1,843,084	281,503	8.5
October	2010	551	63.8	67,048	1,722,062	283,174	8.1
November	2010	601	55.2	64,675	1,611,601	282,579	8.4
December	2010	630	59.3	64,371	1,746,076	279,942	8.2
January	2011	574	57.1	62,930	2,111,908	285,875	8.3
February	2011	606	63.1	58,763	1,891,831	284,608	8.2
March	2011	644	62.1	61,079	1,966,002	285,913	8.3
April	2011	698	60.9	60,939	1,986,145	285,689	7.6
May	2011	597	60.7	65,192	1,723,540	285,066	7.7
June	2011	603	62.9	67,616	1,581,430	284,422	7.7
July	2011	615	60.8	68,839	1,679,484	284,986	8.0
August	2011	620	54.6	62,047	1,734,835	285,342	8.2

*Figures in this table are seasonally adjusted for the Current Conditions Index and differ from those of other published reports, which may not be seasonally adjusted. Many of the figures published for the Wichita economy in the Kansas Economic Indicators are not seasonally adjusted.

Table 3. Current Indicators (not seasonally adjusted)

Month	Year	Number of Home Sales	Hotel Occupancy Rate (%)	Number of Outbound Airline Passengers	Outbound Airfreight Shipments in Pounds	Number of Employed	Unemployment Rate (%)
August	2010	583	61.6	66,230	1,902,000	281,200	8.7
September	2010	613	65.5	65,934	1,890,000	282,900	8.4
October	2010	564	65.6	68,576	1,862,000	285,700	8.1
November	2010	558	55.3	63,267	1,804,000	285,700	8.4
December	2010	595	47.8	65,704	1,716,000	284,800	7.7
January	2011	357	47.9	54,826	2,042,000	279,900	8.7
February	2011	416	56.8	47,929	1,538,000	280,200	8.4
March	2011	604	64.0	63,256	1,618,000	283,800	8.3
April	2011	696	60.8	57,615	1,984,000	286,600	7.5
May	2011	697	64.5	71,312	1,786,000	286,900	7.6
June	2011	747	67.2	74,062	1,768,000	287,300	7.9
July	2011	746	65.3	75,306	1,902,000	282,800	7.9
August	2011	753	61.2	65,527	1,688,000	282,500	8.2

Figure 2. Number of New and Existing Home Sales

**For the 13 Months Ending August 2011
(seasonally adjusted)**

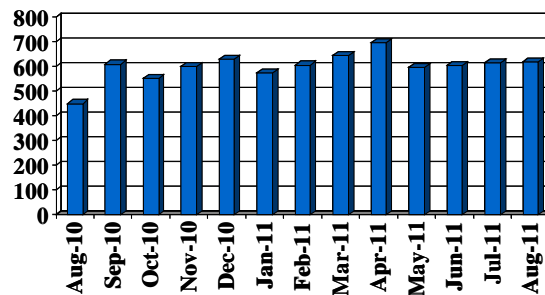


Figure 3. Hotel Occupancy Rate in Percent

For the 13 Months Ending August 2011
(seasonally adjusted)

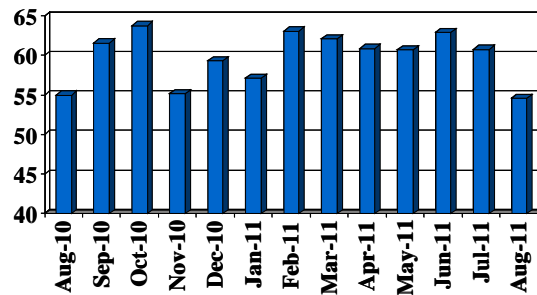


Figure 4. Number of Outbound Airline Passengers

For the 13 Months Ending August 2011
(seasonally adjusted)

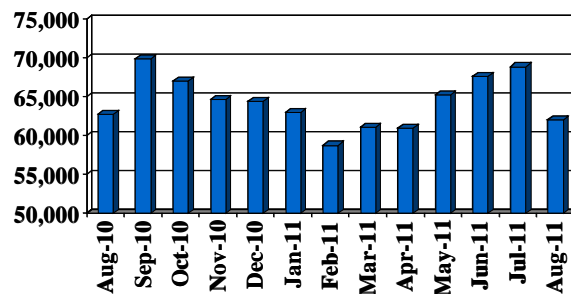


Figure 5. Outbound Airfreight Shipments in Pounds

For the 13 Months Ending August 2011
(seasonally adjusted)

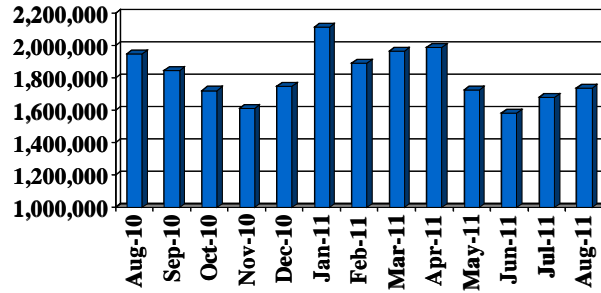


Figure 6. Number of Non-Farm Wage & Salary Employed

For the 13 Months Ending August 2011
(seasonally adjusted)

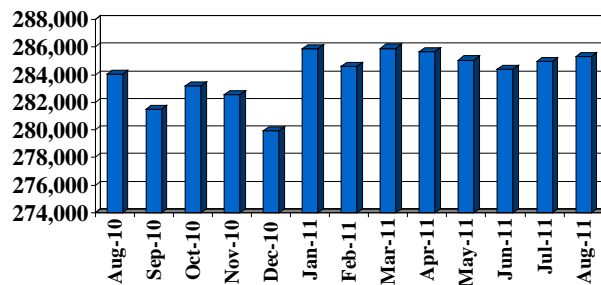
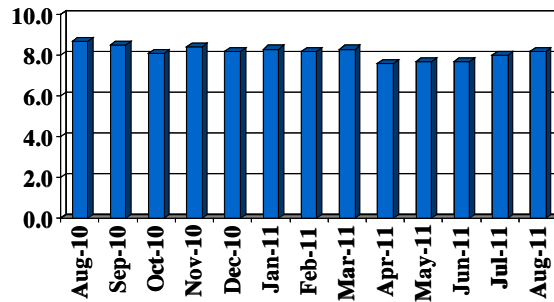


Figure 7. Unemployment Rate in Percent

For the 13 Months Ending August 2011
(seasonally adjusted)



Acknowledgments

The Center for Economic Development and Business Research wishes to thank Dr. Terence Decker for his invaluable assistance in developing the methodology for the WSU Current Conditions Index. Dr. Decker teaches Economics in the Barton School of Business at Wichita State University.