



WICHITA STATE  
UNIVERSITY

W. FRANK BARTON  
SCHOOL OF BUSINESS

Center for Economic Development  
and Business Research

# Wichita Metro Area Leading Economic Indicators Index Results for Third Quarter 2011

## *Introduction*

The WSU Leading Economic Indicators Index is designed to give an indication of where the Wichita economy is headed. Leading indicators tend to change before the economy itself changes. The WSU Leading Economic Indicators Index is composed of nine monthly indicators including:

- Kansas monthly initial claims for unemployment insurance
- Value of building permits, new residential construction
- Value of building permits, new non-residential construction
- National Index of Consumer Confidence
- Average weekly hours worked in manufacturing
- New orders for aircraft
- Stock prices of aerospace companies
- Wheat prices (futures) and the
- The Conference Board's national index of leading economic indicators

The WSU Current Conditions Index is designed to reflect the present state of the economy. The WSU Leading Economic Indicators Index, on the other hand, is designed to forecast future movements in the economy. On the national level, The Conference Board releases the most widely followed indicators. The WSU Current Conditions Index is similar to what The Conference Board refers to as their "coincident" indicators index. Likewise the WSU Leading Economic Indicators Index is similar to the Conference Board's Leading Economic Indicators Index.

The WSU Leading Economic Indicators Index may be examined over time to determine the likely future course of the Wichita economy. An increase in the Index over several months signals an expansion in the Wichita economy approximately six months into the future. Similarly, a decline in the Index over several months signals that the area economy is likely to weaken in approximately six months. A movement in the Index in only one month does not produce a clear signal. This interpretation of movements in the Index is similar to that which The Conference Board gives to its national index of leading economic indicators, in which a change in the index must take place for at least three months in a row for a change in the economy to be signaled.

## ***Summary of Results***

### **Quarter-to-Quarter Comparisons: Second Quarter 2011 to Third Quarter 2011**

- The Leading Economic Indicators Index increased 0.9 percent
- Kansas initial claims for unemployment increased 10.9 percent
- Value of new residential construction permits decreased 13.7 percent
- Value of new non-residential construction permits increased 30.2 percent
- National Index of Consumer Confidence decreased 11.8 percentage points
- Average hours worked per week in manufacturing decreased 2.5 percent
- Value of new orders for aircraft and parts increased 25.4 percent.
- Aerospace stock index decreased 11 percent
- Wheat prices decreased 13.4 percent
- The Conference Board's Index of Leading Economic Indicators increased 1.5 percentage points

### **Year-Over-Year Quarterly Comparisons: Third Quarter 2010 to Third Quarter 2011**

- The Leading Economic Indicators Index increased 9.6 percent
- Kansas initial claims for unemployment increased 1.8 percent
- Value of new residential construction permits increased 21.7 percent
- Value of new non-residential construction permits decreased 1.6 percent
- National Index of Consumer Confidence decreased 1 percentage point
- Average hours worked per week in manufacturing increased 2.9 percent
- Value of new orders for aircraft and parts increased 4.8 percent.
- Aerospace stock index increased 2 percent
- Wheat prices increased 11.2 percent
- The Conference Board's Index of Leading Economic Indicators increased 6.8 percentage points

### **Year-to-Year Comparisons: September 2010 to September 2011**

**(12 months ending September 2010 compared to the 12 months ending September 2011)**

- The Leading Economic Indicators Index increased 8.6 percent
- Kansas initial claims for unemployment decreased 18.1 percent
- Value of new residential construction permits decreased 15.7 percent
- Value of new non-residential construction permits increased 9.6 percent
- National Index of Consumer Confidence increased 5.9 percentage points
- Average hours worked per week in manufacturing increased 2.5 percent
- Value of new orders for aircraft and parts increased 9.8 percent.
- Aerospace stock index increased 5 percent
- Wheat prices increased 43.3 percent
- The Conference Board's Index of Leading Economic Indicators increased 6.5 percentage points

**Table 1. Leading Economic Indicators Index for September 2011**

Month	Year	Index	Percentage Change
September	2010	107.82	1.3
October	2010	108.93	1.0
November	2010	110.72	1.6
December	2010	111.28	0.5
January	2011	112.68	1.3
February	2011	112.37	-0.3
March	2011	114.71	2.1
April	2011	115.23	0.5
May	2011	115.95	0.6
June	2011	116.29	0.3
July	2011	115.55	-0.6
August	2011	117.50	1.7
September	2011	117.45	0.0
3rd Quarter	2010	106.62	
3rd Quarter	2011	116.83	9.6

**Table 2. Leading Economic Indicators**

Month	Year	Initial Unemployment Claims	New Residential Construction Permits (real \$)	New Non-Residential Construction Permits (real \$)	National Index of Consumer Confidence <sup>1</sup>	Avg. Hours Worked Per Week	New Orders for Aircraft millions real \$	Aero-space Stock Index (real \$)	Wheat Prices Futures (real \$)	Nat'l Index LEI <sup>1</sup>
September	2010	11,798	3,614,698	884,105	48.6	40.9	14,250	263.46	5.42	109.9
October	2010	16,989	2,484,598	7,983,437	49.9	42.2	12,989	274.67	5.19	110.1
November	2010	14,406	3,970,221	7,876,531	57.8	42.3	7,712	270.91	5.65	111.4
December	2010	19,126	2,702,415	1,534,765	63.4	43.2	3,576	267.19	5.82	112.3
January	2011	29,544	1,920,139	16,003,433	64.8	42.8	8,902	275.34	6.36	112.5
February	2011	11,910	3,396,917	2,425,720	72.0	43.2	10,397	292.96	6.73	113.5
March	2011	11,453	3,871,838	18,859,837	63.8	43.6	10,550	299.10	6.43	114.3
April	2011	13,727	2,769,271	12,317,867	66.0	43.1	8,320	294.61	6.37	114.0
May	2011	12,742	6,687,236	11,507,526	61.7	43.6	10,265	292.98	6.14	114.8
June	2011	11,994	6,464,256	9,219,497	57.6	43.8	7,958	278.76	6.22	115.2
July	2011	16,245	4,707,995	4,632,534	59.2	41.5	10,479	291.74	4.90	115.9
August	2011	11,914	5,012,639	35,790,167	45.2	43.2	13,238	240.69	5.40	116.2
September	2011	14,514	4,015,665	2,600,484	45.4	42.5	9,575	238.65	5.92	116.4

<sup>1</sup>Source: The Conference Board. Copyright (C) 2011. All rights reserved. No claim to orig. U.S. Govt. works pursuant to U.S. Contract No. 52-SABA-5-00128. --DISCLAIMER--The BCI data is provided with no guarantees or warranties of any kind. While The Conference Board tries to ensure that the information it provides is accurate when it is obtained directly from the source agencies, The Conference Board cannot be held responsible for mistakes or misinterpretations.

Fig 1. Leading Economic Indicators Index for the 13 Months Ending September 2011 (percentage change)

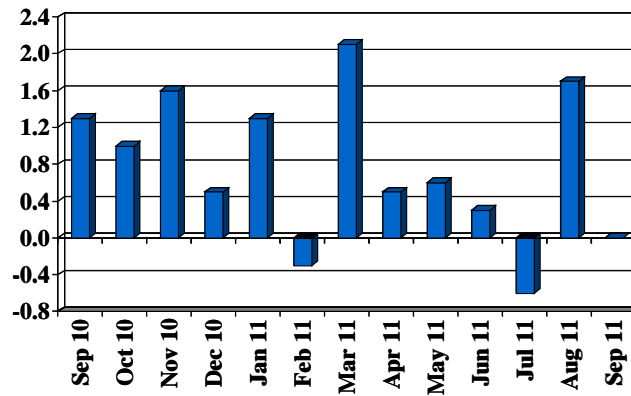


Fig 2. Initial Unemployment Claims for the 13 Months Ending September 2011

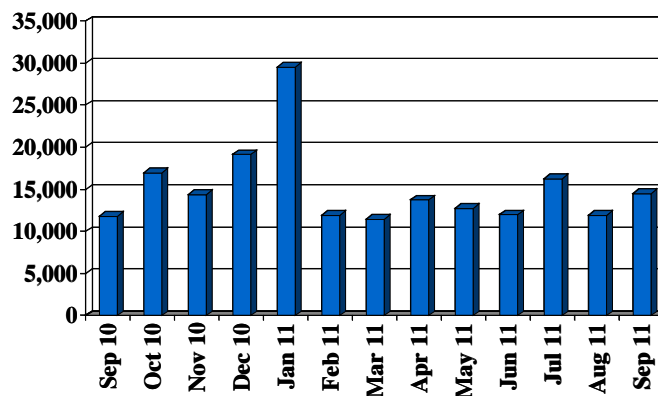


Fig 3. New Residential Construction Permits for the 13 Months Ending September 2011 (real dollars)

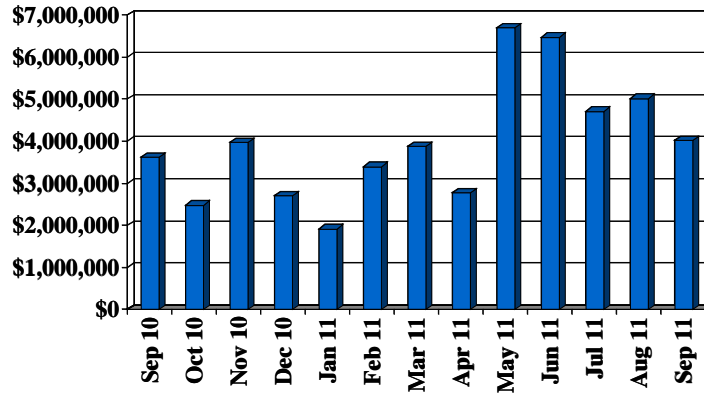


Fig 4. New Non-Residential Construction Permits for the 13 Months Ending September 2011 (real dollars)

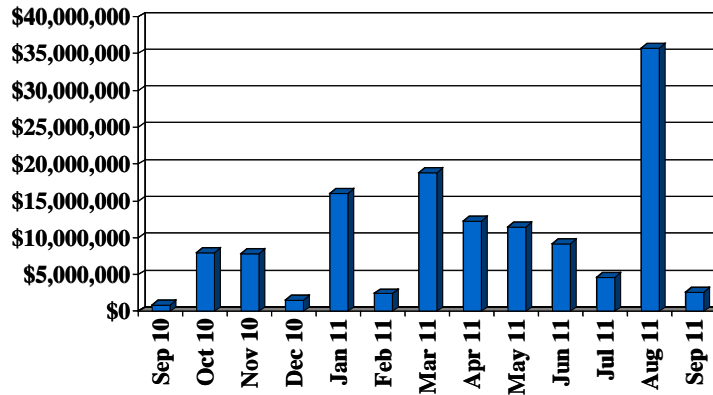
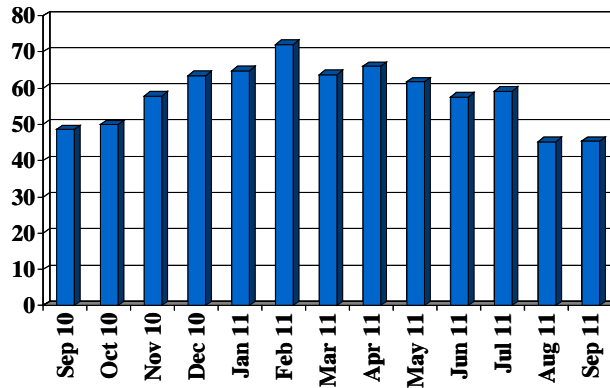


Fig 5. National Index of Consumer Confidence for the 13 Months Ending September 2011



Source: The Conference Board. Copyright (C) 2011. All rights reserved. No claim to orig. U.S. Govt. works pursuant to U.S. Contract No. 52-SABA-5-00128. --DISCLAIMER--The BCI data is provided with no guarantees or warranties of any kind. While The Conference Board tries to ensure that the information it provides is accurate when it is obtained directly from the source agencies, The Conference Board cannot be held responsible for mistakes or misinterpretations.

Fig 6. Average Hours Worked Per Week in Manufacturing for the 13 Months Ending September 2011

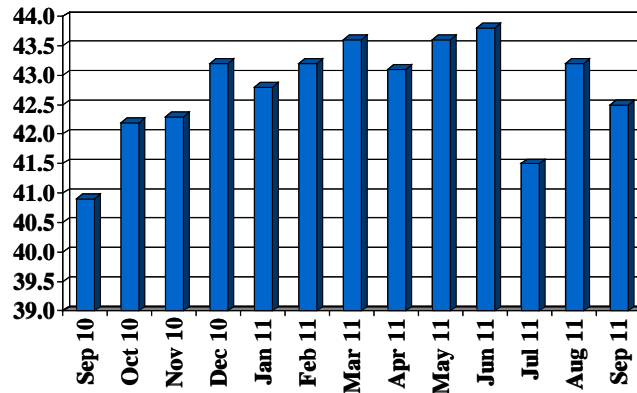


Fig 7. New Orders for Aircraft for the 13 Months Ending September 2011  
(millions of real dollars)

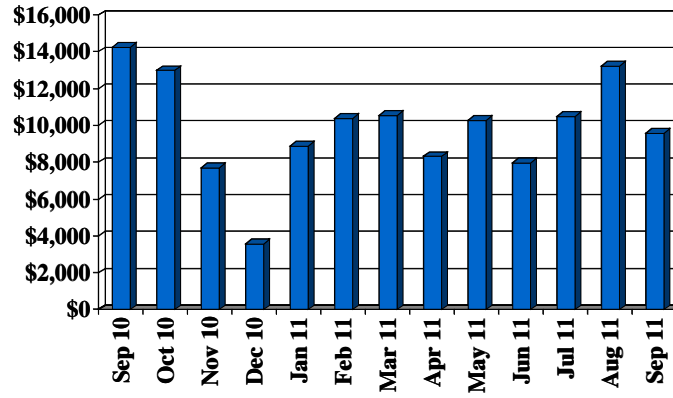


Fig 8. Aerospace Stock Prices for the 13 Months Ending September 2011  
(real dollars)

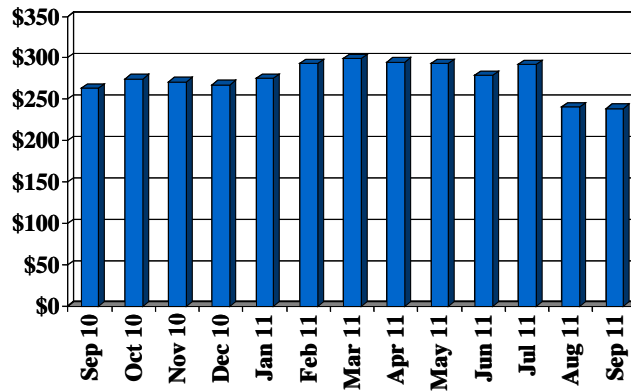


Fig 9. Wheat Prices (real dollars) for the 13 Months Ending September 2011

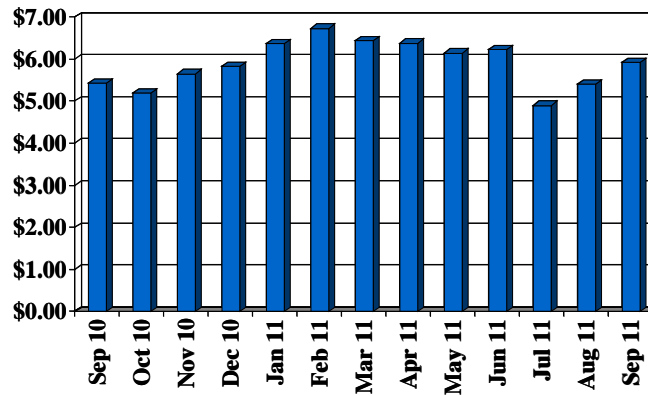
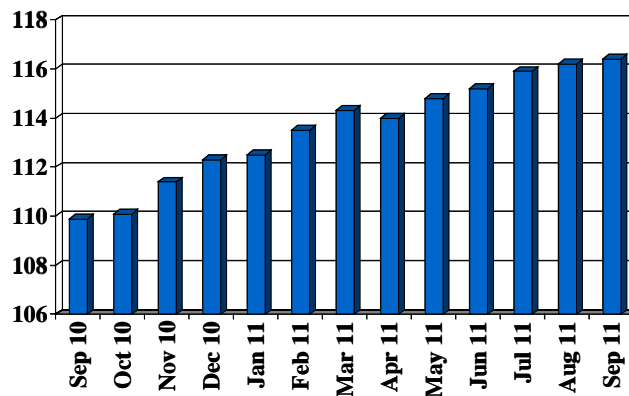


Fig 10. The Conference Board National Index of Leading Economic Indicators for the 13 Months Ending September 2011



Source: The Conference Board. Copyright (C) 2011. All rights reserved. No claim to orig. U.S. Govt. works pursuant to U.S. Contract No. 52-SABA-5-00128. --DISCLAIMER--The BCI data is provided with no guarantees or warranties of any kind. While The Conference Board tries to ensure that the information it provides is accurate when it is obtained directly from the source agencies, The Conference Board cannot be held responsible for mistakes or misinterpretations.

### Acknowledgments

The Center for Economic Development and Business Research wishes to thank Dr. Terence Decker for his invaluable assistance in developing the methodology for the WSU Leading Economic Indicators Index. Dr. Decker teaches Economics in the Barton School of Business at Wichita State University.