

Local Industry Performance in National Business Cycles

Wichita MSA

July 1990 – December 2011



CEDBR

Center for Economic Development
and Business Research

Introduction

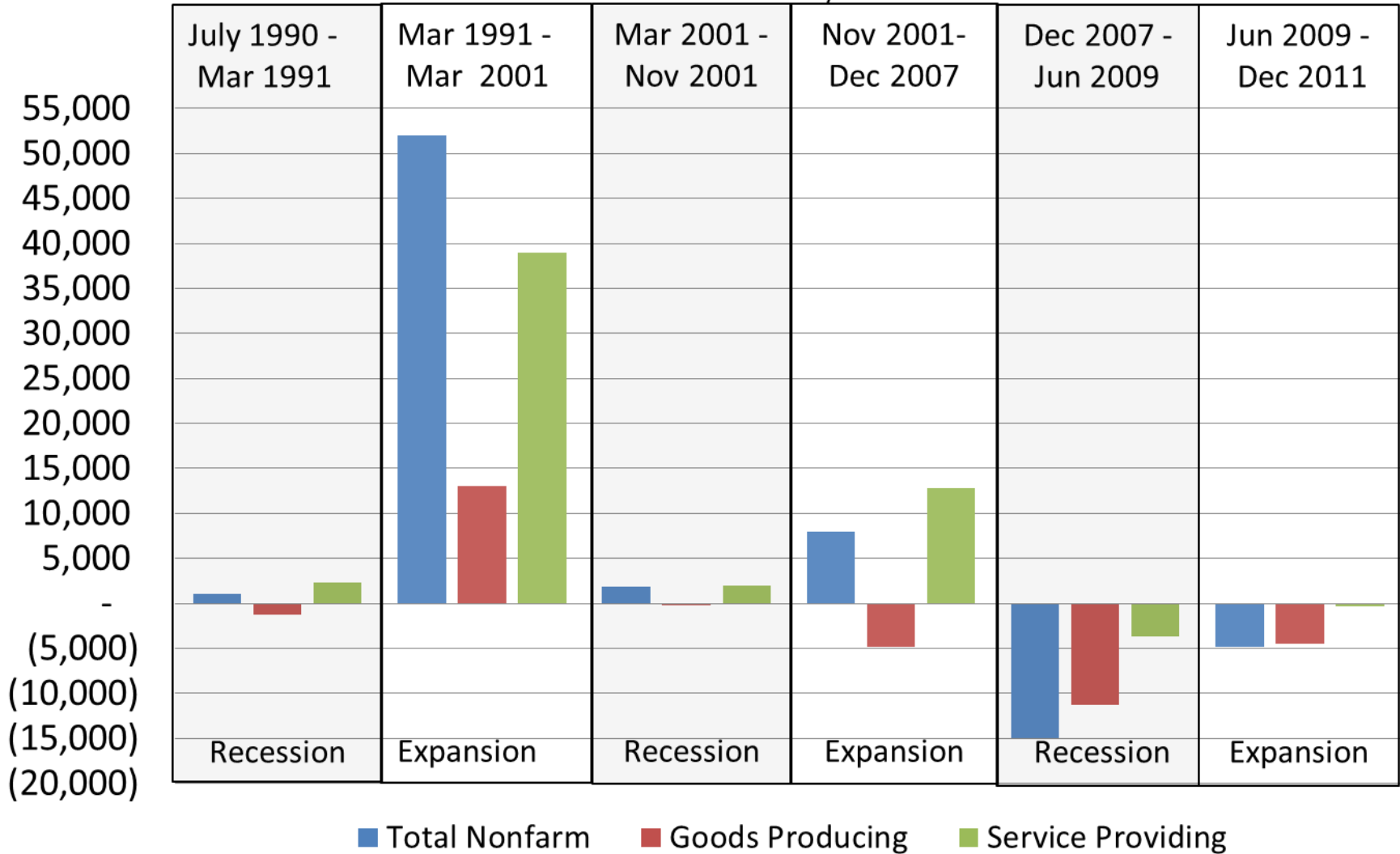
The following presentation contains data on the change in industry employment levels for the Wichita MSA during national business cycles. There is information on total nonfarm employment, detailed goods producing, detailed service providing and government employment.

The business cycle dates are from the National Bureau of Economic Research. The most current data is for the expansion that began at the end of the great recession, June 2009, through the most current data available, December 2011.

TOTAL NONFARM EMPLOYMENT

Wichita MSA - Change in Nonfarm Employment

National Business Cycles



Wichita MSA Change in Nonfarm Employment by Business Cycle

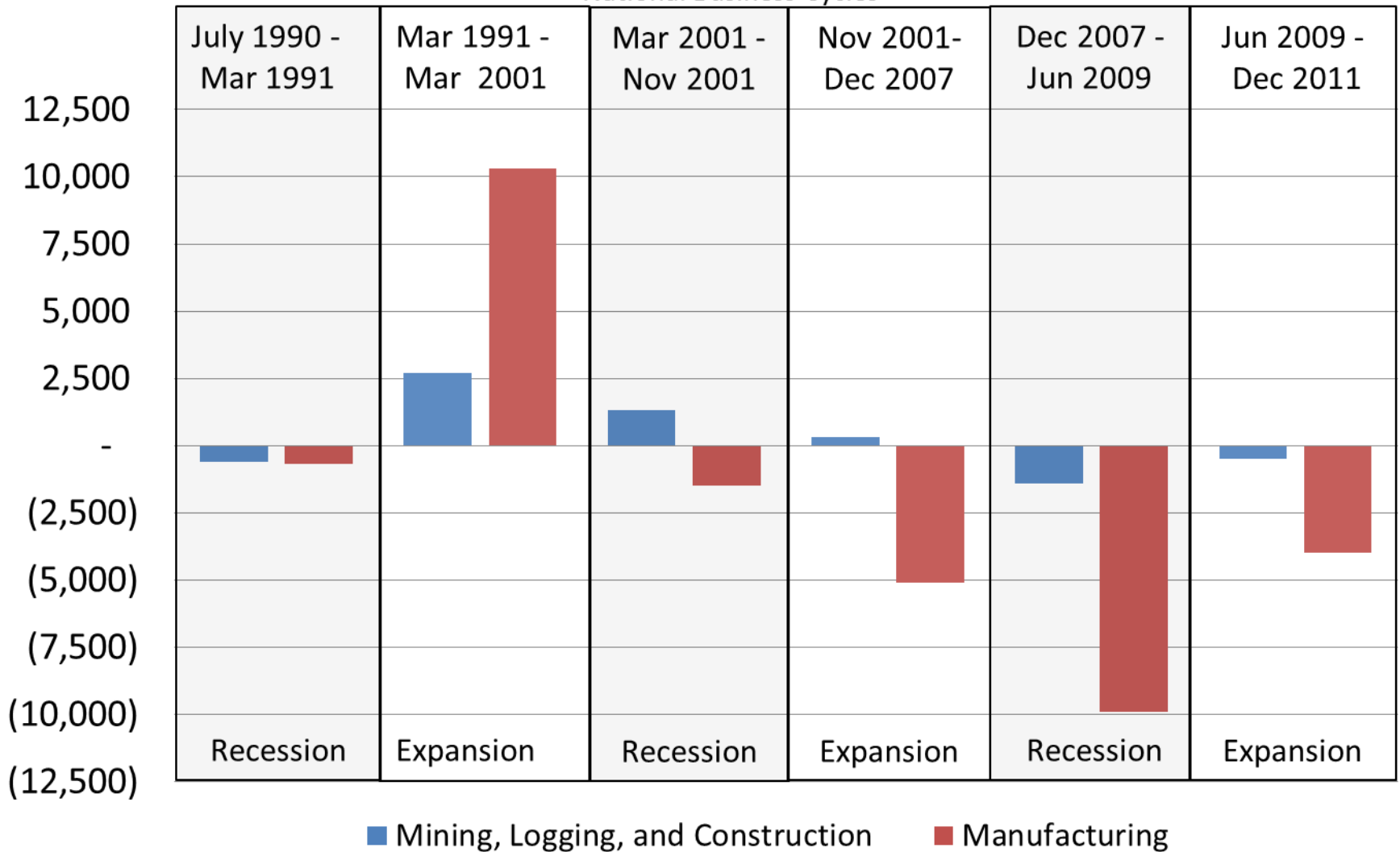
Recessions	July 1990 - Mar 1991		Mar 2001 - Nov 2001		Dec 2007 - Jun 2009	
	#	%	#	%	#	%
Total Nonfarm	1,000	0.41%	1,800	0.60%	-15,000	-4.87%
Goods Producing	-1,300	-1.69%	-200	-0.23%	-11,300	-13.55%
Service Providing	2,300	1.36%	2,000	0.95%	-3,700	-1.65%
Expansions	Mar 1991 - Mar 2001		Nov 2001 - Dec 2007		Jun 2009 - Dec 2011	
	#	%	#	%	#	%
Total Nonfarm	52,000	21.10%	8,000	2.66%	-4,800	-1.64%
Goods Producing	13,000	17.24%	-4,800	-5.44%	-4,500	-6.24%
Service Providing	39,000	22.81%	12,800	6.04%	-300	-0.14%
Total July 1990 - Oct 2011	During Recessions		During Expansions		Net Total	
	#	%	#	%	#	%
Total Nonfarm		-12,200		55,200	43,000	17.52%
Goods Producing		-12,800		3,700	-9,100	-11.86%
Service Providing		600		51,500	52,100	30.88%

Source: Bureau of Labor Statistics, State and Area Employment

GOODS PRODUCING EMPLOYMENT

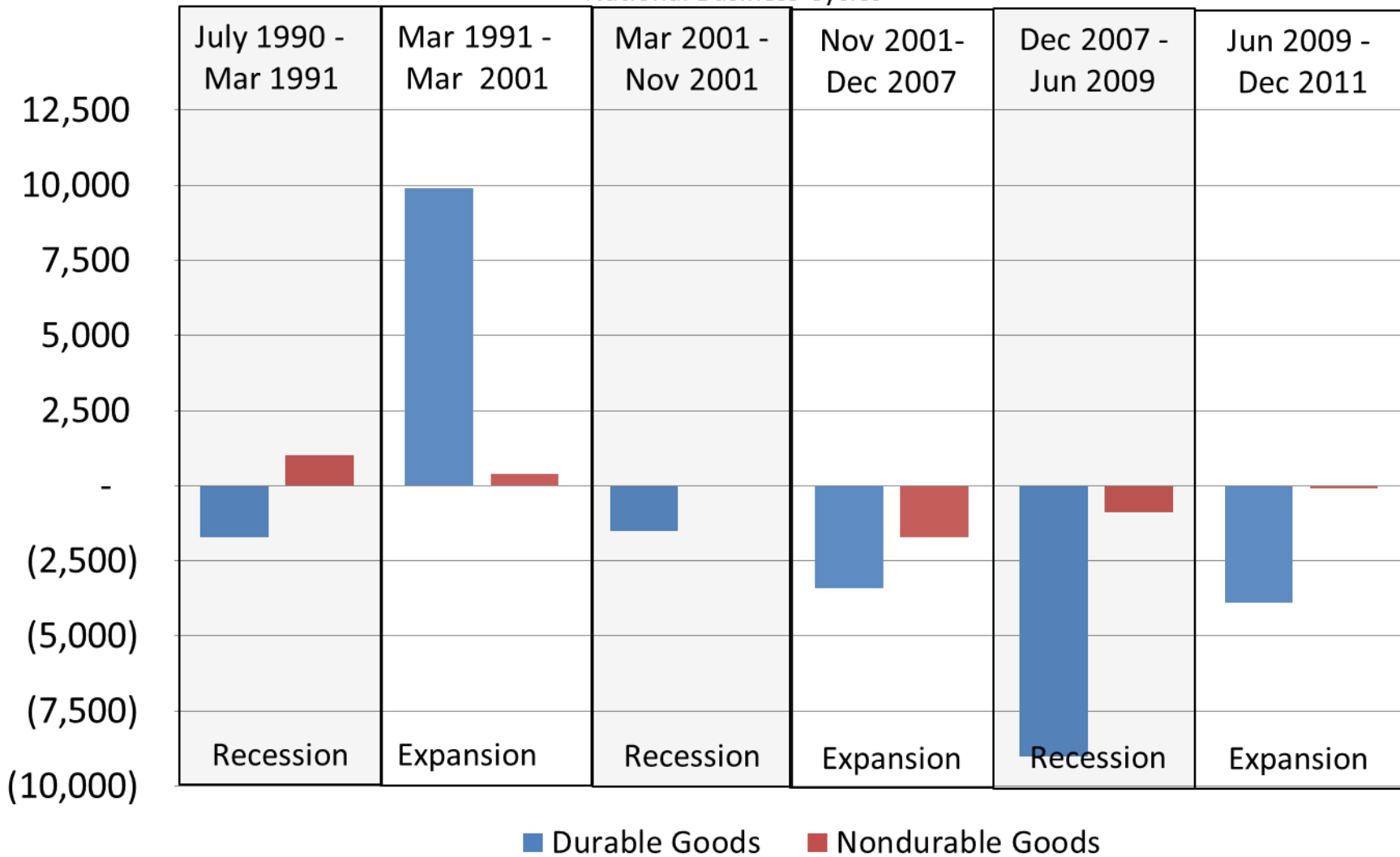
Wichita MSA - Change in Goods Producing Employment

National Business Cycles



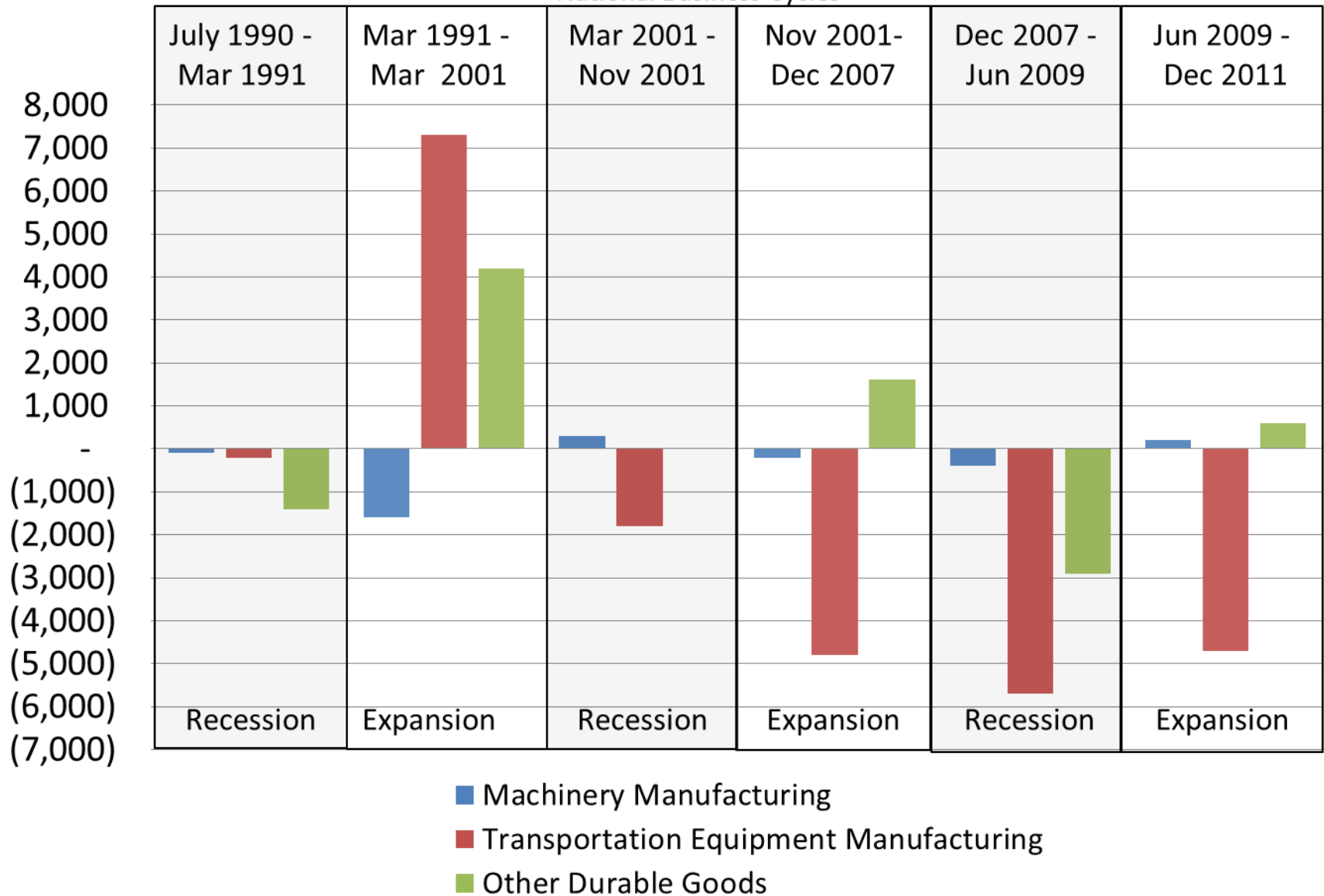
Wichita MSA - Change in Manufacturing Employment

National Business Cycles



Wichita MSA - Change in Durable Goods Employment

National Business Cycles



Wichita MSA Change in Goods Producing Employment by Business Cycle

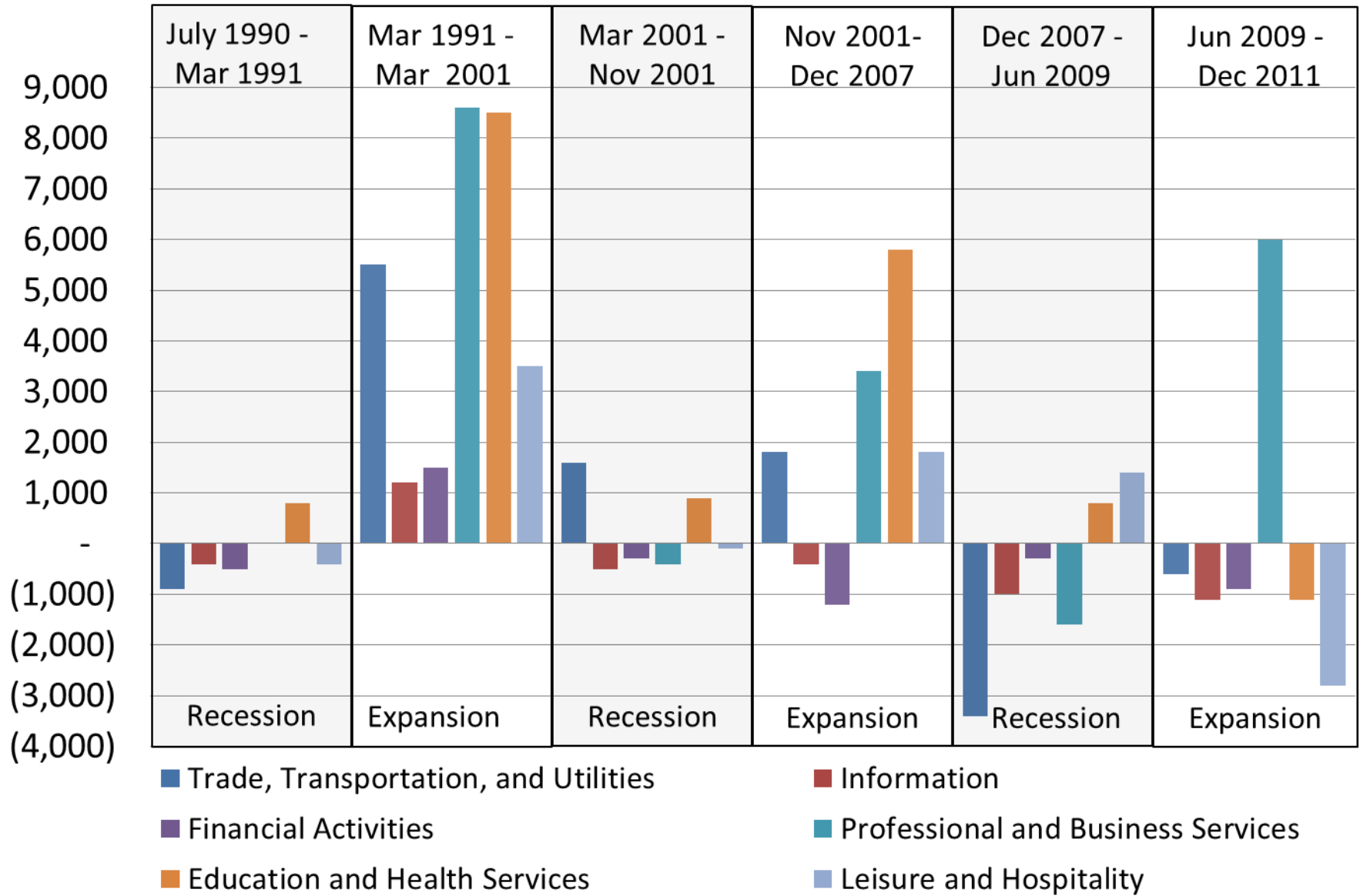
Recessions	July 1990 - Mar 1991		Mar 2001 - Nov 2001		Dec 2007 - Jun 2009		
	#	%	#	%	#	%	
Goods Producing	-1,300	-1.69%	-200	-0.23%	-11,300	-13.55%	
Mining, Logging, and Construction	-600	-4.65%	1,300	8.67%	-1,400	-8.43%	
Manufacturing	-700	-1.10%	-1,500	-2.04%	-9,900	-14.82%	
Nondurable Goods	1,000	11.76%	0	0.00%	-900	-10.98%	
Durable Goods	-1,700	-3.07%	-1,500	-2.36%	-9,000	-15.36%	
Machinery Manufacturing	-100	-1.43%	300	5.66%	-400	-7.41%	
Transportation Equipment Manufacturing	-200	-0.50%	-1,800	-3.85%	-5,700	-14.18%	
Other Durable Goods	-1,400	-16.28%	0	0.00%	-2,900	-22.31%	
Expansions	Mar 1991 - Mar 2001		Nov 2001 - Dec 2007		Jun 2009 - Dec 2011		
	#	%	#	%	#	%	
Goods Producing	13,000	17.24%	-4,800	-5.44%	-4,500	-6.24%	
Mining, Logging, and Construction	2,700	21.95%	300	1.84%	-500	-3.29%	
Manufacturing	10,300	16.32%	-5,100	-7.09%	-4,000	-7.03%	
Nondurable Goods	400	4.21%	-1,700	-17.17%	-100	-1.37%	
Durable Goods	9,900	18.47%	-3,400	-5.48%	-3,900	-7.86%	
Machinery Manufacturing	-1,600	-23.19%	-200	-3.57%	200	4.00%	
Transportation Equipment Manufacturing	7,300	18.48%	-4,800	-10.67%	-4,700	-13.62%	
Other Durable Goods	4,200	58.33%	1,600	14.04%	600	5.94%	
Total July 1990 - Oct 2011	During Recessions		During Expansions		Net Total		
	#	%	#	%	#	%	
Goods Producing		-12,800		3,700		-9,100	-11.86%
Mining, Logging, and Construction		-700		2,500		1,800	13.95%
Manufacturing		-12,100		1,200		-10,900	-17.36%
Nondurable Goods		100		-1,400		-1,300	-15.29%
Durable Goods		-12,200		2,600		-9,600	-17.36%
Machinery Manufacturing		-200		-2,200		-1,800	-25.71%
Transportation Equipment Manufacturing		-7,700		-2,400		-9,900	-24.94%
Other Durable Goods		-4,300		6,400		2,100	24.42%

Source: Bureau of Labor Statistics, State and Area Employment

PRIVATE SERVICE PROVIDING EMPLOYMENT

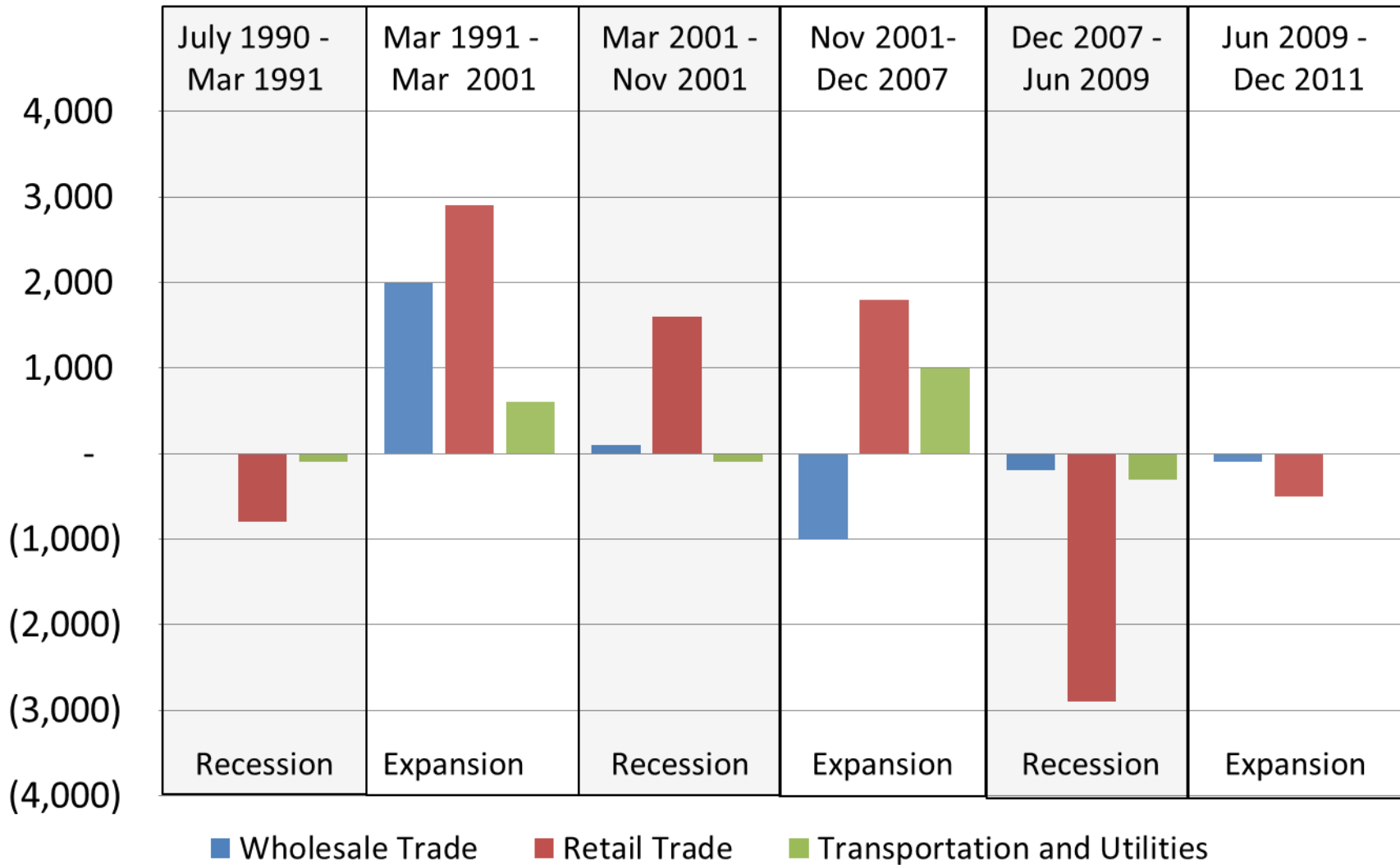
Wichita MSA - Change in Private Service Providing Employment

National Business Cycles



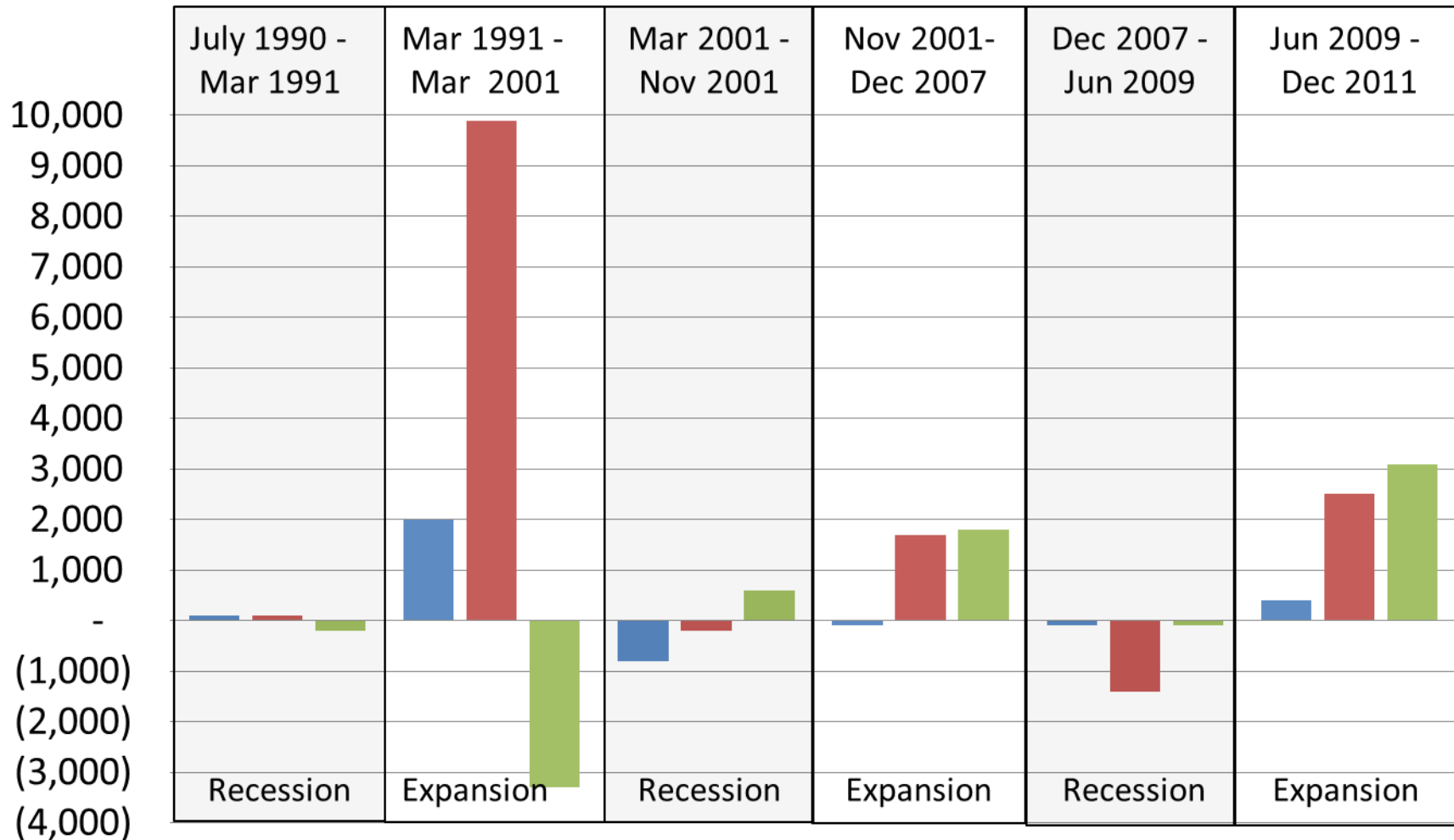
Wichita MSA - Change in Trade, Transportation & Utilities Employment

National Business Cycles



Wichita MSA - Change in Professional & Business Services Employment

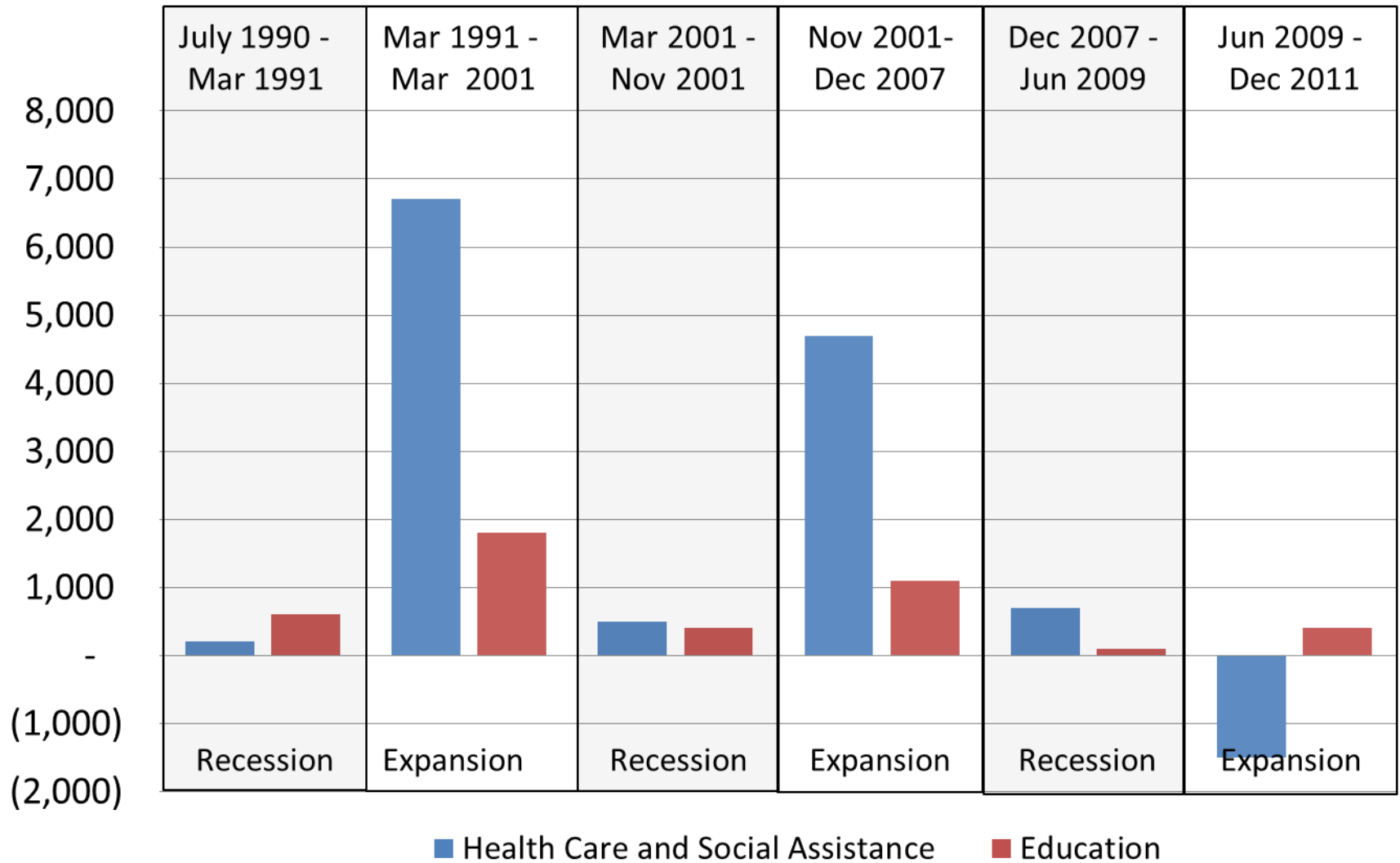
National Business Cycles



- Professional, Scientific, and Technical Services
- Administrative and Support and Waste Management and Remediation Services
- Other Professional and Business Services

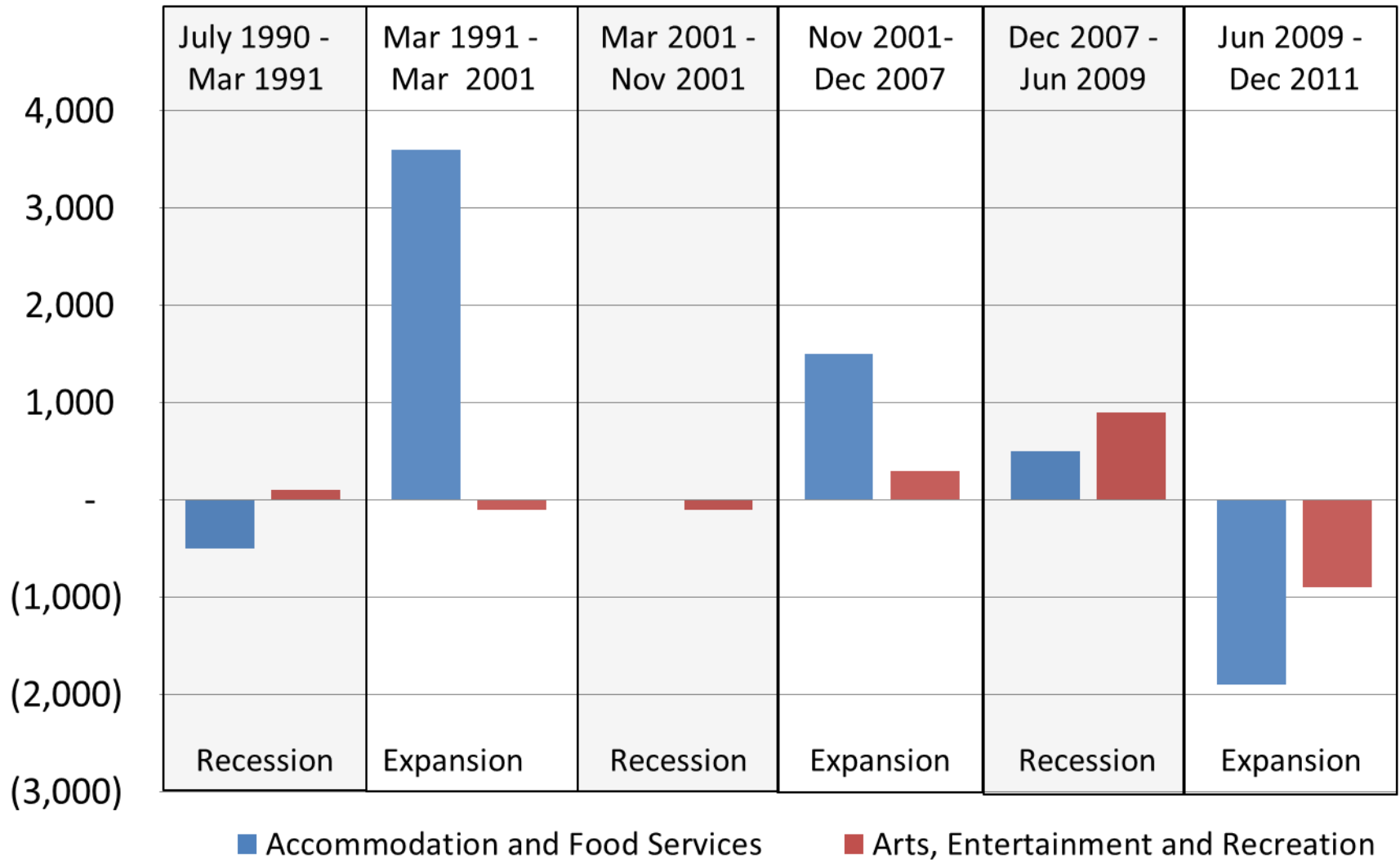
Wichita MSA - Change in Education and Health Services Employment

National Business Cycles



Wichita MSA - Change in Leisure and Hospitality Employment

National Business Cycles



Source: Bureau of Labor Statistics, State and Area Employment

Wichita MSA Change in Private Service Providing Employment by Business Cycle

Recessions	July 1990 - Mar 1991		Mar 2001 - Nov 2001		Dec 2007 - Jun 2009	
	#	%	#	%	#	%
Private Service Providing	-1,700	-1.20%	1,600	0.94%	-4,100	-2.24%
Trade, Transportation, and Utilities	-900	-1.97%	1,600	3.19%	-3,400	-6.34%
Information	-400	-6.25%	-500	-6.94%	-1,000	-15.87%
Financial Activities	-500	-4.13%	-300	-2.29%	-300	-2.59%
Professional and Business Services	0	0.00%	-400	-1.45%	-1,600	-5.25%
Education and Health Services	800	2.95%	900	2.47%	800	1.86%
Leisure and Hospitality	-400	-1.76%	-100	-0.39%	1,400	5.09%
Other Services	-300	-3.49%	400	3.81%	0	0.00%
Expansions	Mar 1991 - Mar 2001		Nov 2001 - Dec 2007		Jun 2009 - Dec 2011	
	#	%	#	%	#	%
Private Service Providing	31,000	22.19%	11,000	6.38%	-500	-0.28%
Trade, Transportation, and Utilities	5,500	12.30%	1,800	3.47%	-600	-1.20%
Information	1,200	20.00%	-400	-5.97%	-1,100	-20.75%
Financial Activities	1,500	12.93%	-1,200	-9.38%	-900	-7.96%
Professional and Business Services	8,600	45.50%	3,400	12.55%	6,000	20.76%
Education and Health Services	8,500	30.47%	5,800	15.55%	-1,100	-2.51%
Leisure and Hospitality	3,500	15.70%	1,800	7.00%	-2,800	-9.69%
Other Services	2,200	26.51%	-200	-1.83%	0	0.00%
Total July 1990 - Oct 2011	During Recessions		During Expansions		Net Total	
	#	%	#	%	#	%
Private Service Providing	-4,200		41,500		37,300	26.38%
Trade, Transportation, and Utilities	-2,700		6,700		4,000	8.77%
Information	-1,900		-300		-2,200	-34.38%
Financial Activities	-1,100		-600		-1,700	-14.05%
Professional and Business Services	-2,000		18,000		16,000	84.66%
Education and Health Services	2,500		13,200		15,700	57.93%
Leisure and Hospitality	900		2,500		3,400	14.98%
Other Services	100		2,000		2,100	24.42%

Source: Bureau of Labor Statistics, State and Area Employment

Wichita MSA Change in Trade, Transportaion, and Utilities Employment by Business Cycle

Recessions	July 1990 - Mar 1991		Mar 2001 - Nov 2001		Dec 2007 - Jun 2009		
	#	%	#	%	#	%	
Trade, Transportation, and Utilities	-900	-1.97%	1,600	3.19%	-3,400	-6.34%	
Wholesale Trade	0	0.00%	100	0.83%	-200	-1.80%	
Retail Trade	-800	-2.82%	1,600	5.25%	-2,900	-8.55%	
Transportation and Utilities	-100	-1.39%	-100	-1.30%	-300	-3.49%	
Expansions	Mar 1991 - Mar 2001		Nov 2001 - Dec 2007		Jun 2009 - Dec 2011		
	#	%	#	%	#	%	
Trade, Transportation, and Utilities	5,500	12.30%	1,800	3.47%	-600	-1.20%	
Wholesale Trade	2,000	20.00%	-1,000	-8.26%	-100	-0.92%	
Retail Trade	2,900	10.51%	1,800	5.61%	-500	-1.61%	
Transportation and Utilities	600	8.45%	1,000	13.16%	0	0.00%	
Total July 1990 - Oct 2011	During Recessions		During Expansions		Net Total		
	#	%	#	%	#	%	
Trade, Transportation, and Utilities		-2,700		6,700		4,000	8.77%
Wholesale Trade		-100		900		800	8.00%
Retail Trade		-2,100		4,200		2,100	7.39%
Transportation and Utilities		-500		1,600		1,100	15.28%

Source: Bureau of Labor Statistics, State and Area Employment

Wichita MSA Change in Professional and Business Services Employment by Business Cycle

Recessions	July 1990 - Mar 1991		Mar 2001 - Nov 2001		Dec 2007 - Jun 2009	
	#	%	#	%	#	%
Professional and Business Services	0	0.00%	-400	-1.45%	-1,600	-5.25%
Professional, Scientific, and Technical Services	100	1.32%	-800	-8.25%	-100	-1.14%
Administrative and Support and Waste Management and Remediation Services	100	1.45%	-200	-1.18%	-1,400	-7.61%
Other Professional and Business Services	-200	-4.55%	600	66.67%	-100	-3.03%
Expansions	Mar 1991 - Mar 2001		Nov 2001 - Dec 2007		Jun 2009 - Dec 2011	
	#	%	#	%	#	%
Professional and Business Services	8,600	45.50%	3,400	12.55%	6,000	20.76%
Professional, Scientific, and Technical Services	2,000	25.97%	-100	-1.12%	400	4.60%
Administrative and Support and Waste Management and Remediation Services	9,900	141.43%	1,700	10.18%	2,500	14.71%
Other Professional and Business Services	-3,300	-78.57%	1,800	120.00%	3,100	96.88%
Total July 1990 - Oct 2011	During Recessions		During Expansions		Net Total	
	#	%	#	%	#	%
Professional and Business Services		-2,000		18,000		84.66%
Professional, Scientific, and Technical Services		-800		2,300		19.74%
Administrative and Support and Waste Management and Remediation Services		-1,500		14,100		182.61%
Other Professional and Business Services		300		1,600		43.18%

Source: Bureau of Labor Statistics, State and Area Employment

Wichita MSA Change in Education and Health Services Employment by Business Cycle

Recessions	July 1990 - Mar 1991		Mar 2001 - Nov 2001		Dec 2007 - Jun 2009	
	#	%	#	%	#	%
Education and Health Services	800	2.95%	900	2.47%	800	1.86%
Health Care and Social Assistance	200	0.80%	500	1.57%	700	1.89%
Education	600	28.57%	400	8.89%	100	1.67%
Expansions	Mar 1991 - Mar 2001		Nov 2001 - Dec 2007		Jun 2009 - Dec 2011	
	#	%	#	%	#	%
Education and Health Services	8,500	30.47%	5,800	15.55%	-1,100	-2.51%
Health Care and Social Assistance	6,700	26.59%	4,700	14.51%	-1,500	-3.97%
Education	1,800	66.67%	1,100	22.45%	400	6.56%
Total July 1990 - Oct 2011	During Recessions		During Expansions		Net Total	
	#	%	#	%	#	%
Education and Health Services	2,500	57.93%	13,200	57.93%	15,700	57.93%
Health Care and Social Assistance	1,400	45.20%	9,900	45.20%	11,300	45.20%
Education	1,100	209.52%	3,300	209.52%	4,400	209.52%

Source: Bureau of Labor Statistics, State and Area Employment

Wichita MSA Change in Leisure and Hospitality Employment by Business Cycle

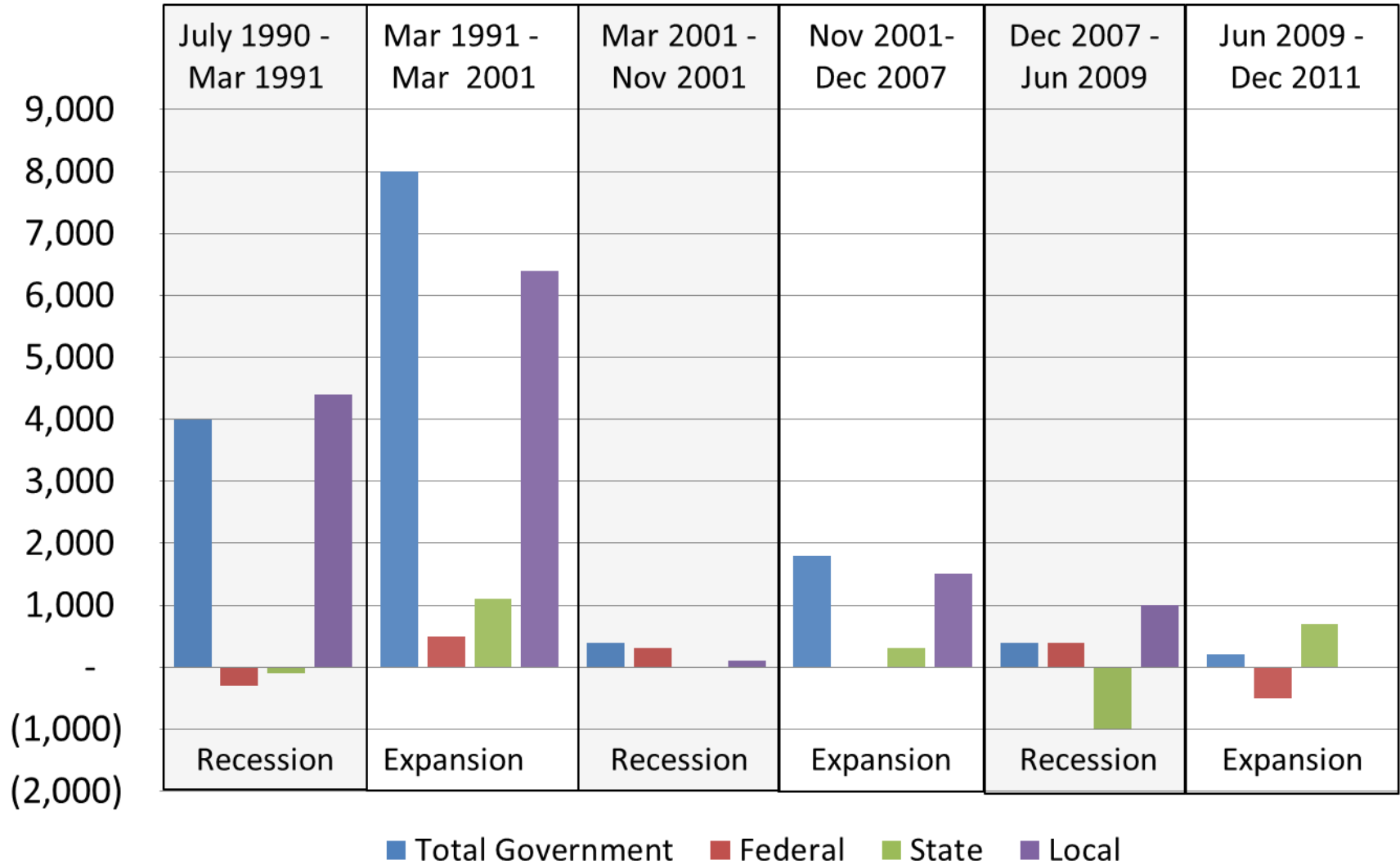
Recessions	July 1990 - Mar 1991		Mar 2001 - Nov 2001		Dec 2007 - Jun 2009	
	#	%	#	%	#	%
Leisure and Hospitality	-400	-1.76%	-100	-0.39%	1,400	5.09%
Accommodation and Food Services	-500	-2.58%	0	0.00%	500	2.08%
Arts, Entertainment and Recreation	100	3.03%	-100	-3.03%	900	25.71%
Expansions	Mar 1991 - Mar 2001		Nov 2001 - Dec 2007		Jun 2009 - Dec 2011	
	#	%	#	%	#	%
Leisure and Hospitality	3,500	15.70%	1,800	7.00%	-2,800	-9.69%
Accommodation and Food Services	3,600	19.05%	1,500	6.67%	-1,900	-7.76%
Arts, Entertainment and Recreation	-100	-2.94%	300	9.38%	-900	-20.45%
Total July 1990 - Oct 2011	During Recessions		During Expansions		Net Total	
	#	%	#	%	#	%
Leisure and Hospitality		900		2,500	3,400	14.98%
Accommodation and Food Services		0		3,200	3,200	16.49%
Arts, Entertainment and Recreation		900		-700	200	6.06%

Source: Bureau of Labor Statistics, State and Area Employment

GOVERNMENT EMPLOYMENT

Wichita MSA - Change in Government Employment

National Business Cycles



Wichita MSA Change in Government Employment by Business Cycle

Recessions	July 1990 - Mar 1991		Mar 2001 - Nov 2001		Dec 2007 - Jun 2009	
	#	%	#	%	#	%
Total Government	4,000	14.65%	400	1.02%	400	0.96%
Federal Government	-300	-6.12%	300	5.88%	400	7.41%
State Government	-100	-2.08%	0	0.00%	-1,000	-16.39%
Local Government	4,400	25.00%	100	0.35%	1,000	3.33%
Expansions	Mar 1991 - Mar 2001		Nov 2001 - Dec 2007		Jun 2009 - Dec 2011	
	#	%	#	%	#	%
Total Government	8,000	25.56%	1,800	4.53%	200	0.48%
Federal Government	500	10.87%	0	0.00%	-500	-8.62%
State Government	1,100	23.40%	300	5.17%	700	13.73%
Local Government	6,400	29.09%	1,500	5.26%	0	0.00%
Total July 1990 - Oct 2011	During Recessions		During Expansions		Net Total	
	#	%	#	%	#	%
Total Government	4,800		10,000		14,800	54.21%
Federal Government	400		0		400	8.16%
State Government	-1,100		2,100		1,000	20.83%
Local Government	5,500		7,900		13,400	76.14%

Source: Bureau of Labor Statistics, State and Area Employment

Thank You

For additional information you may contact us
at: (316) 978-3225

