

Inflation and Producer Prices

Midwest Region and United States

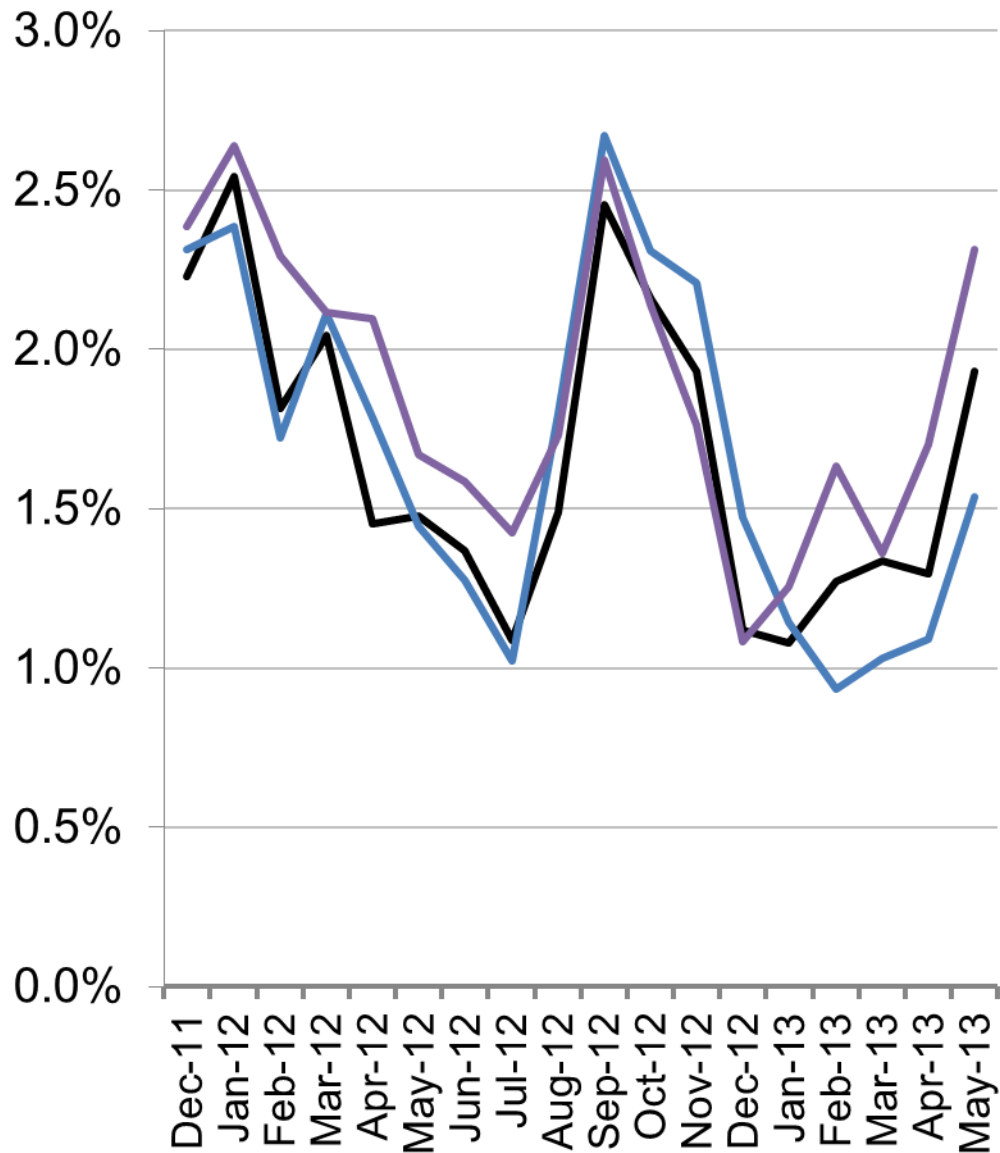
May 2013



CEDBR

Center for Economic Development
and Business Research

Midwest Annual Inflation Rates



— Urban Metro Pop. > 1.5 Mil.
Apr-13 May-13 Change

1.3%	1.9%	↑ 0.6%
------	------	--------

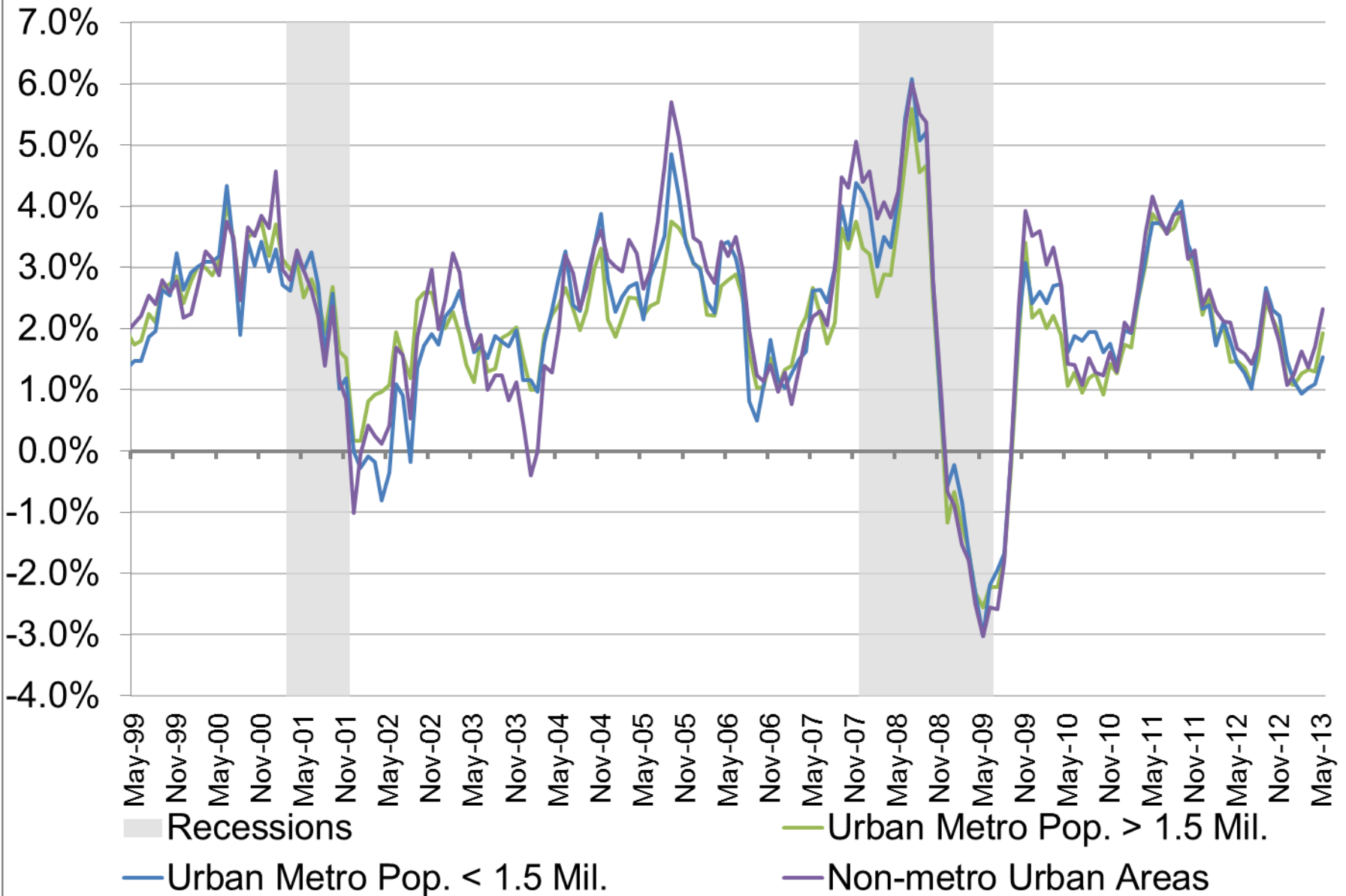
— Urban Metro Pop. < 1.5 Mil.
Apr-13 May-13 Change

1.1%	1.5%	↑ 0.4%
------	------	--------

— Non-metro Urban Areas
Apr-13 May-13 Change

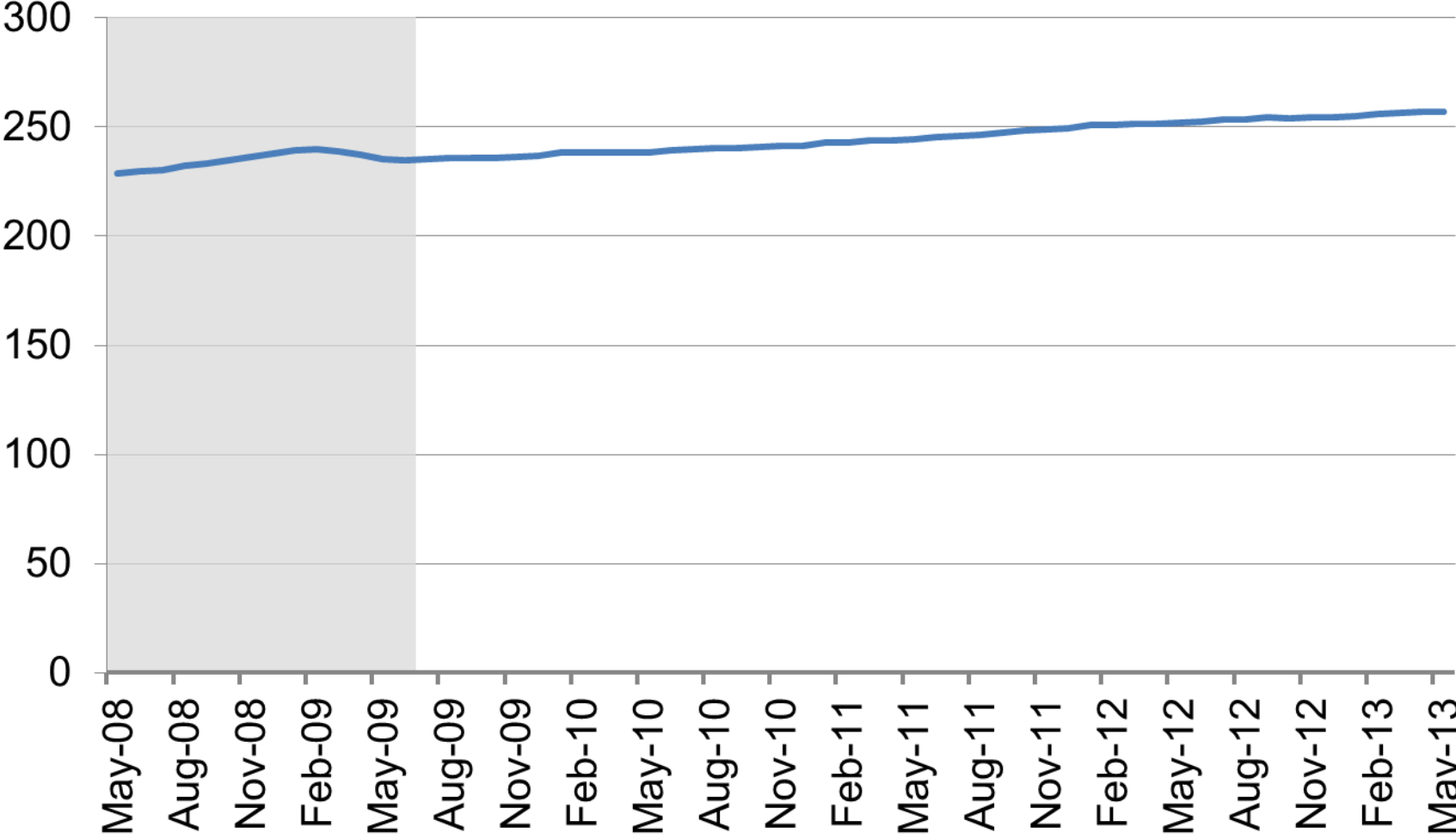
1.7%	2.3%	↑ 0.6%
------	------	--------

Midwest Annual Inflation Rates



Source: Bureau of Labor Statistics

Producer Price Index - Aircraft

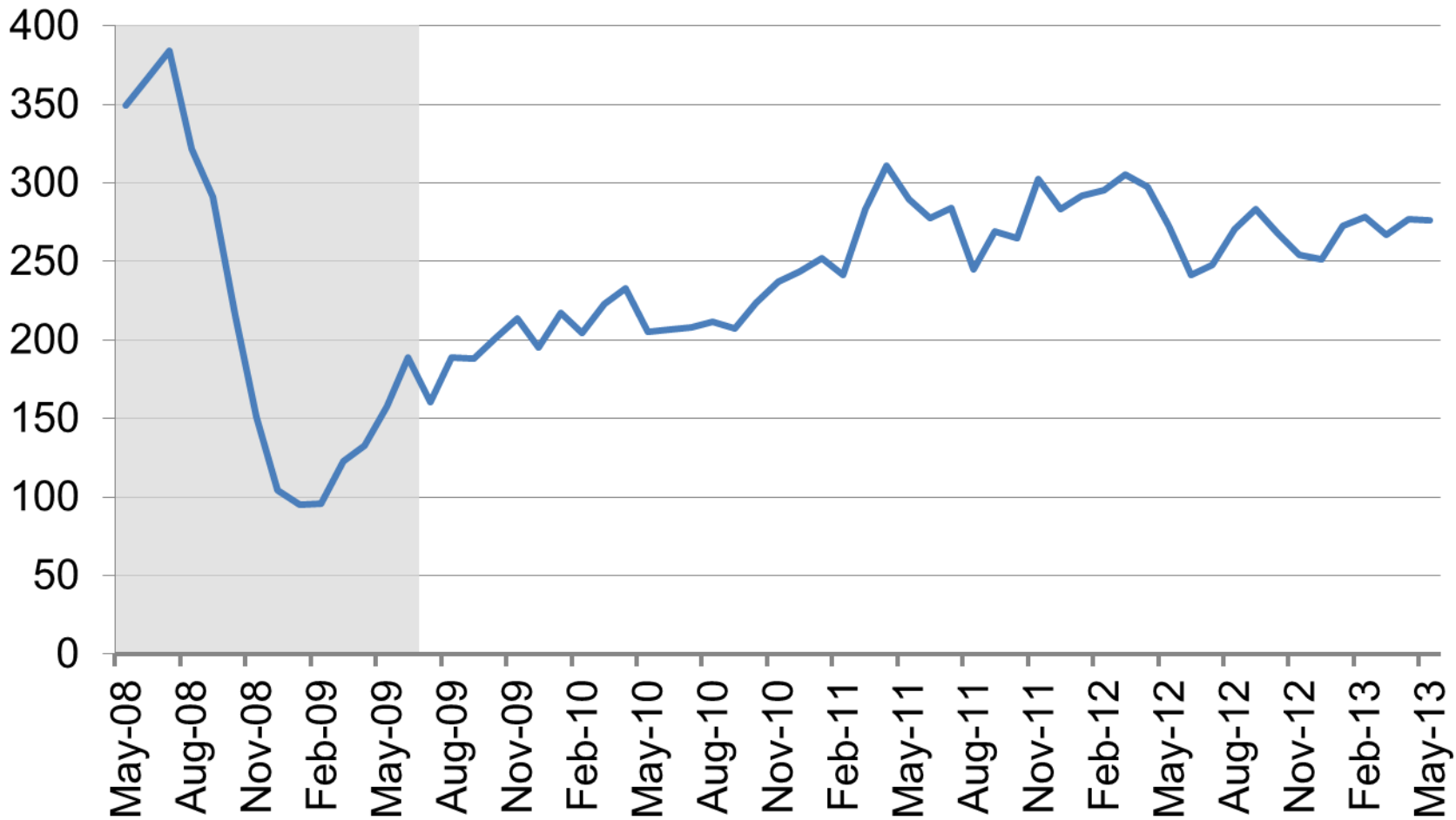


Recession
 Aircraft and Aircraft Equipment

% Change in Price
 May-12 to May-13 ↑ 2.1%
 Apr-13 to May-13 → 0.0%

Source: Bureau of Labor Statistics

Producer Price Index - Crude Petroleum



■ Recession

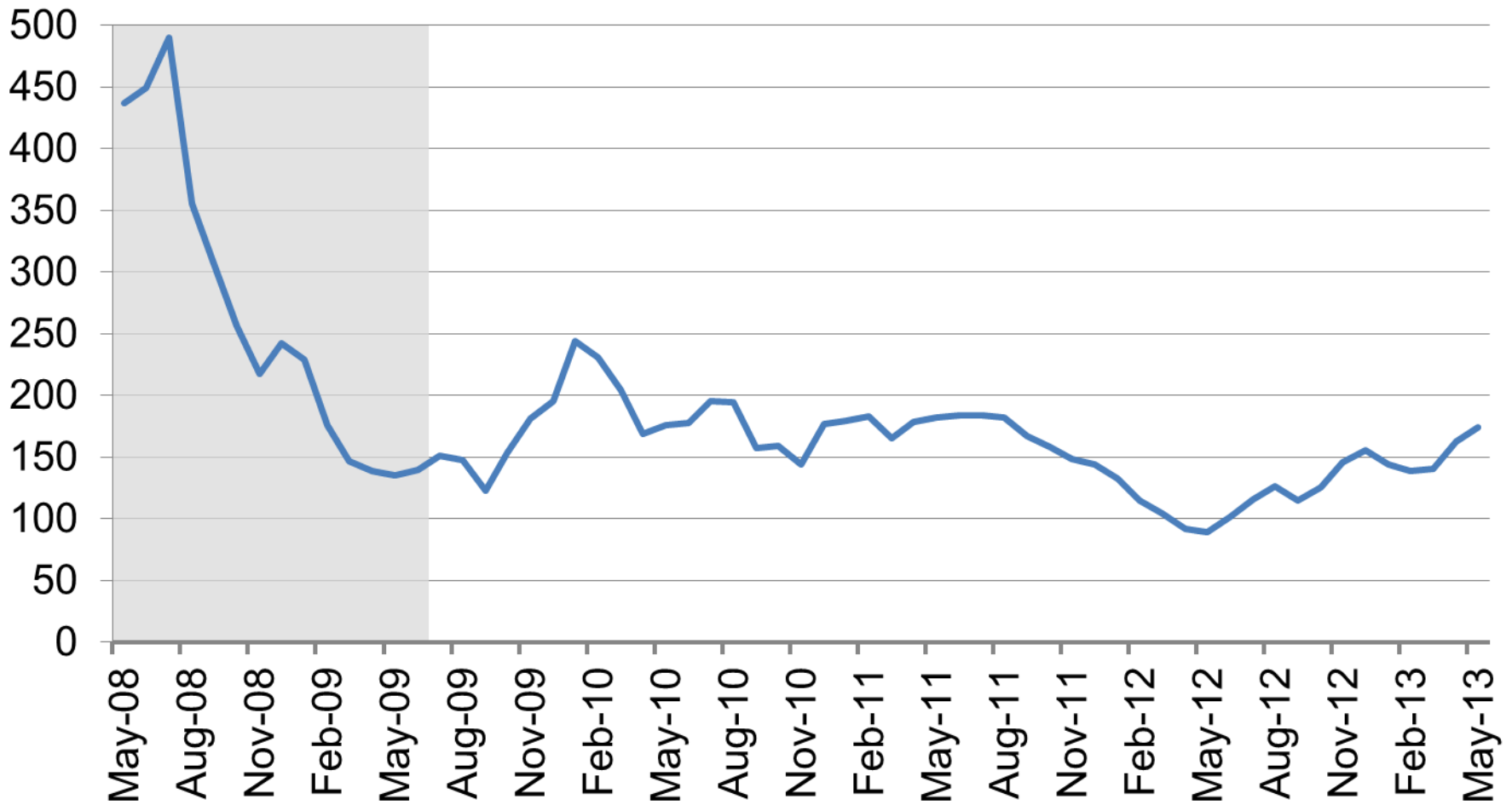
— Crude Petroleum (domestic production)

% Change in Price

May-12 to May-13 ↑ 1.3%
Apr-13 to May-13 ↓ -0.1%

Source: Bureau of Labor Statistics

Producer Price Index - Natural Gas

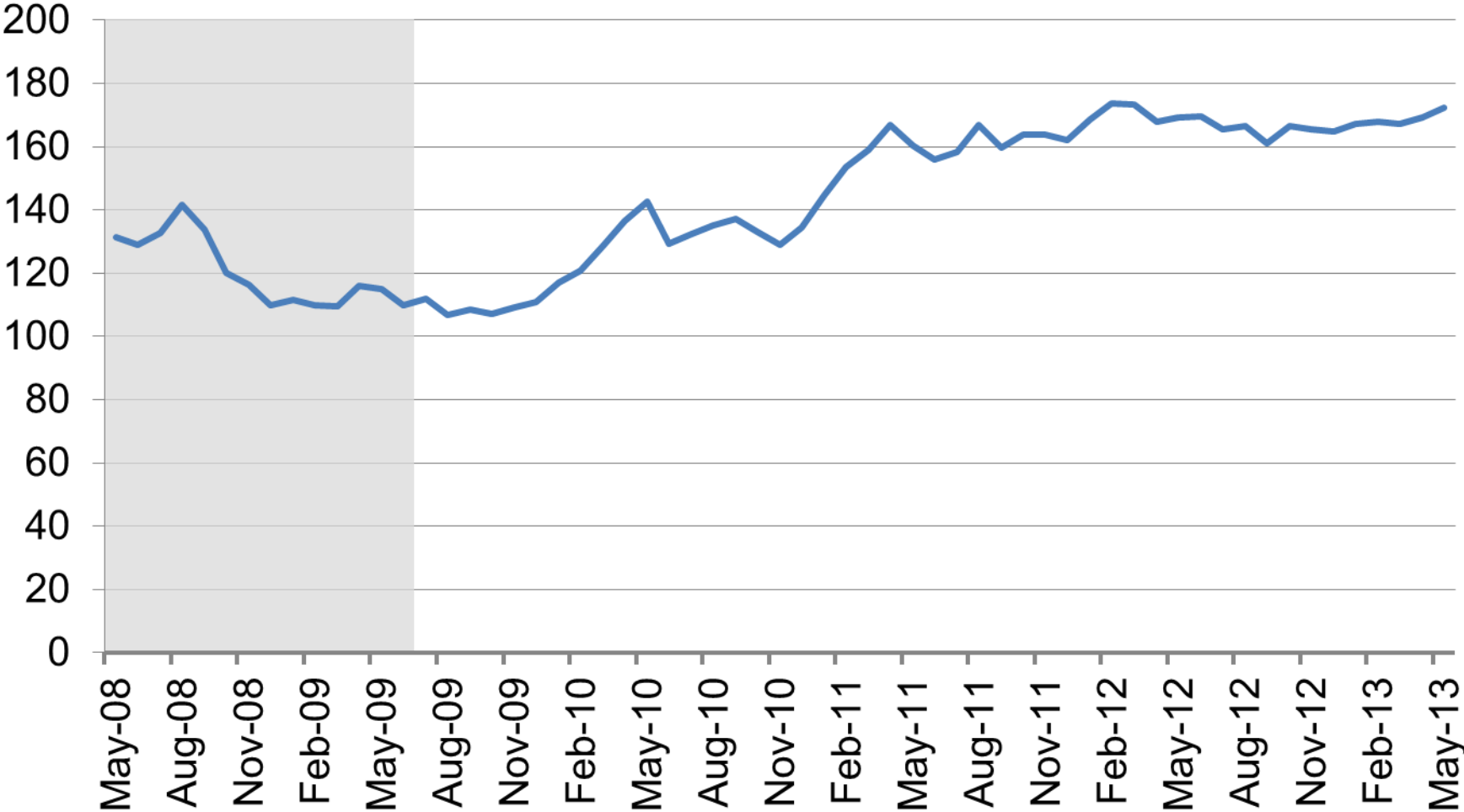


Recession
 Natural Gas

% Change in Price
 May-12 to May-13 ↑ 94.6%
 Apr-13 to May-13 ↑ 6.9%

Source: Bureau of Labor Statistics

Producer Price Index - Slaughter Livestock

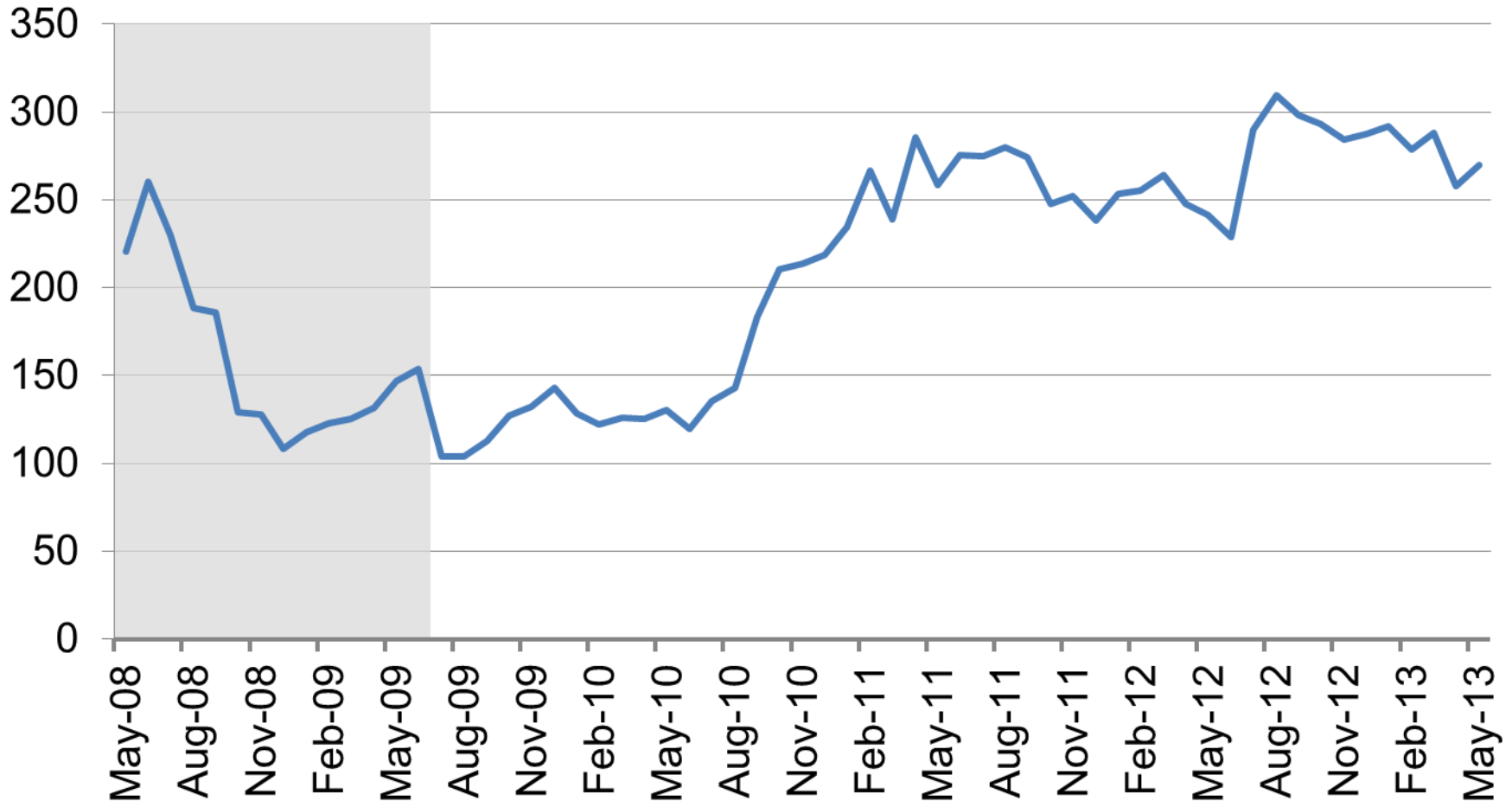


Recession
 Slaughter Livestock

% Change in Price
 May-12 to May-13 ↑ 1.8%
 Apr-13 to May-13 ↑ 1.9%

Source: Bureau of Labor Statistics

Producer Price Index - Sorghum

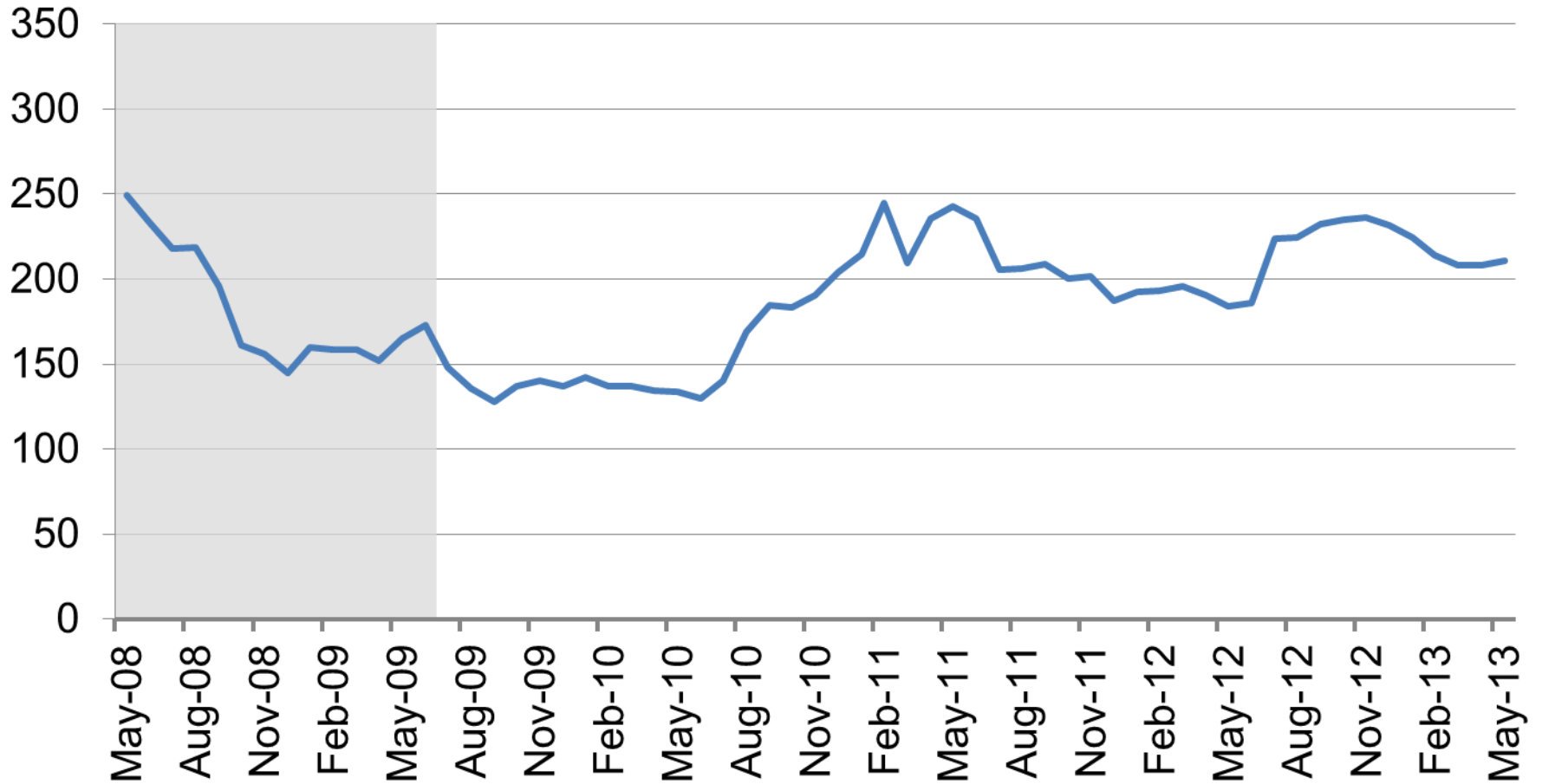


■ Recession
— Sorghum

% Change in Price
May-12 to May-13 ↑ 11.8%
Apr-13 to May-13 ↑ 4.8%

Source: Bureau of Labor Statistics

Producer Price Index - Wheat



■ Recession
— Wheat

% Change in Price
May-12 to May-13 ↑ 14.8%
Apr-13 to May-13 ↑ 1.3%

Data Definitions

- **Consumer Price Index (CPI):** The CPI is used to calculate the annual inflation rate. The CPI is a measure of the average change over time in the prices paid by urban consumers for a market basket of consumer goods and services.
- **Midwest Region:** The Midwest region consists of North Dakota, South Dakota, Nebraska, Kansas, Minnesota, Iowa, Missouri, Wisconsin, Illinois, Michigan, Indiana, and Ohio
- **Producer Price Index (PPI):** The PPI is a family of indexes that measures the average change over time in the selling prices received by domestic producers of goods and services. PPIs measure price change from the perspective of the seller.

Thank You

For additional information you may contact us

at: (316) 978-3225

or

cedbr@wichita.edu



CEDBR

Center for Economic Development
and Business Research