

Employment and Unemployment

State of Kansas and Metropolitan Areas

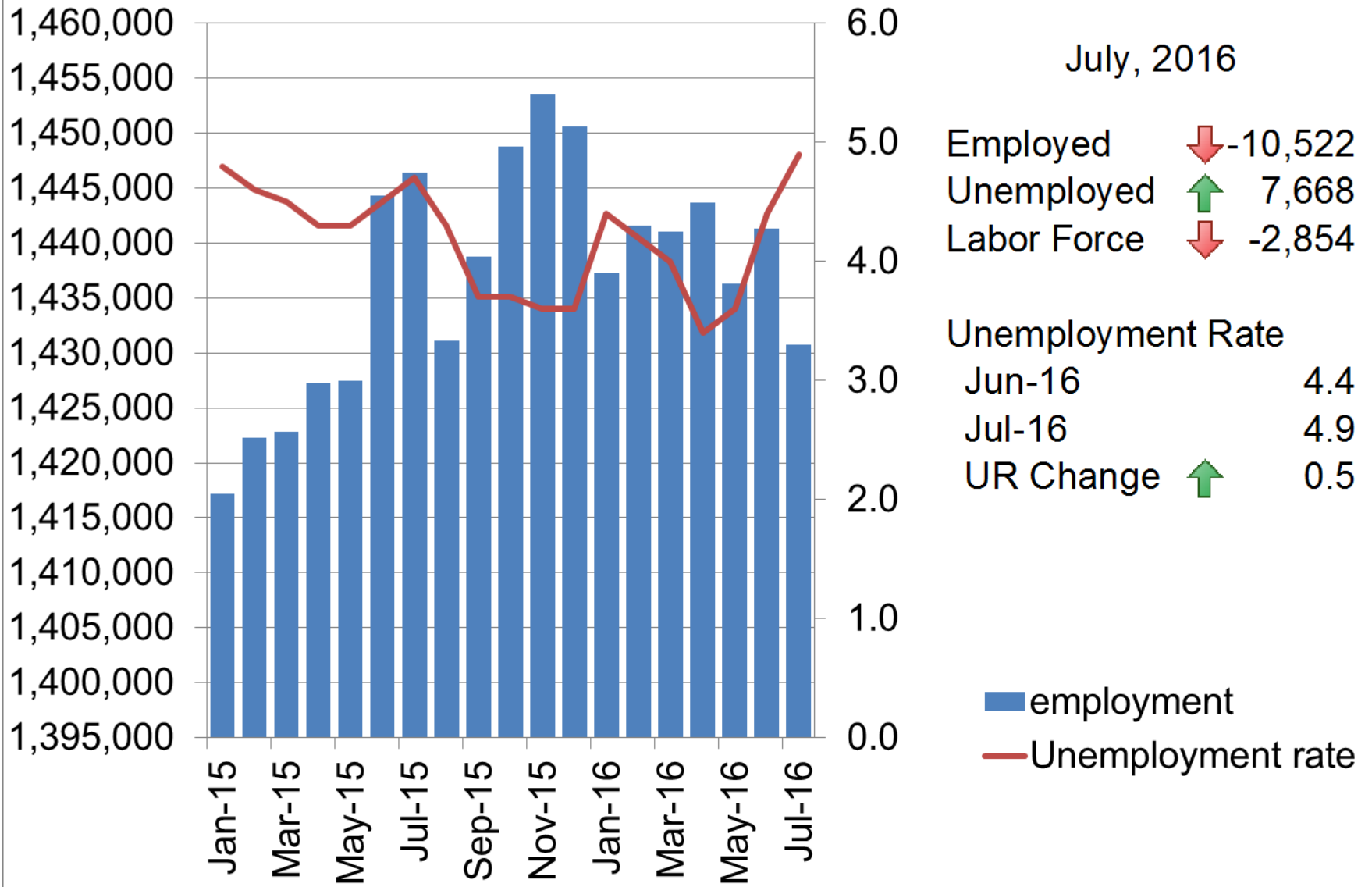
July, 2016



CEDBR

Center for Economic Development
and Business Research

State of Kansas



July, 2016

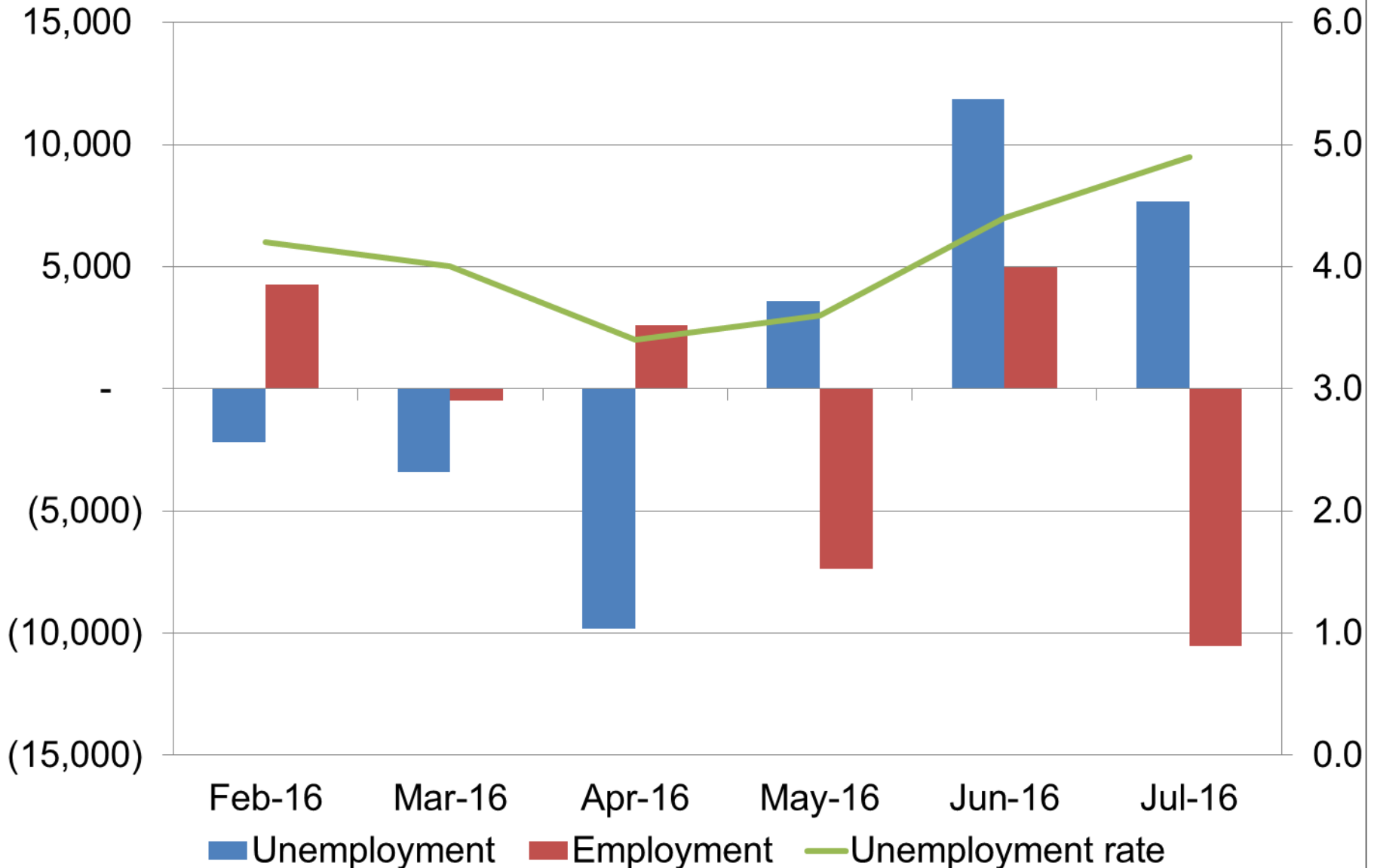
Employed ↓ -10,522
 Unemployed ↑ 7,668
 Labor Force ↓ -2,854

Unemployment Rate
 Jun-16 4.4
 Jul-16 4.9
 UR Change ↑ 0.5

■ employment
 — Unemployment rate

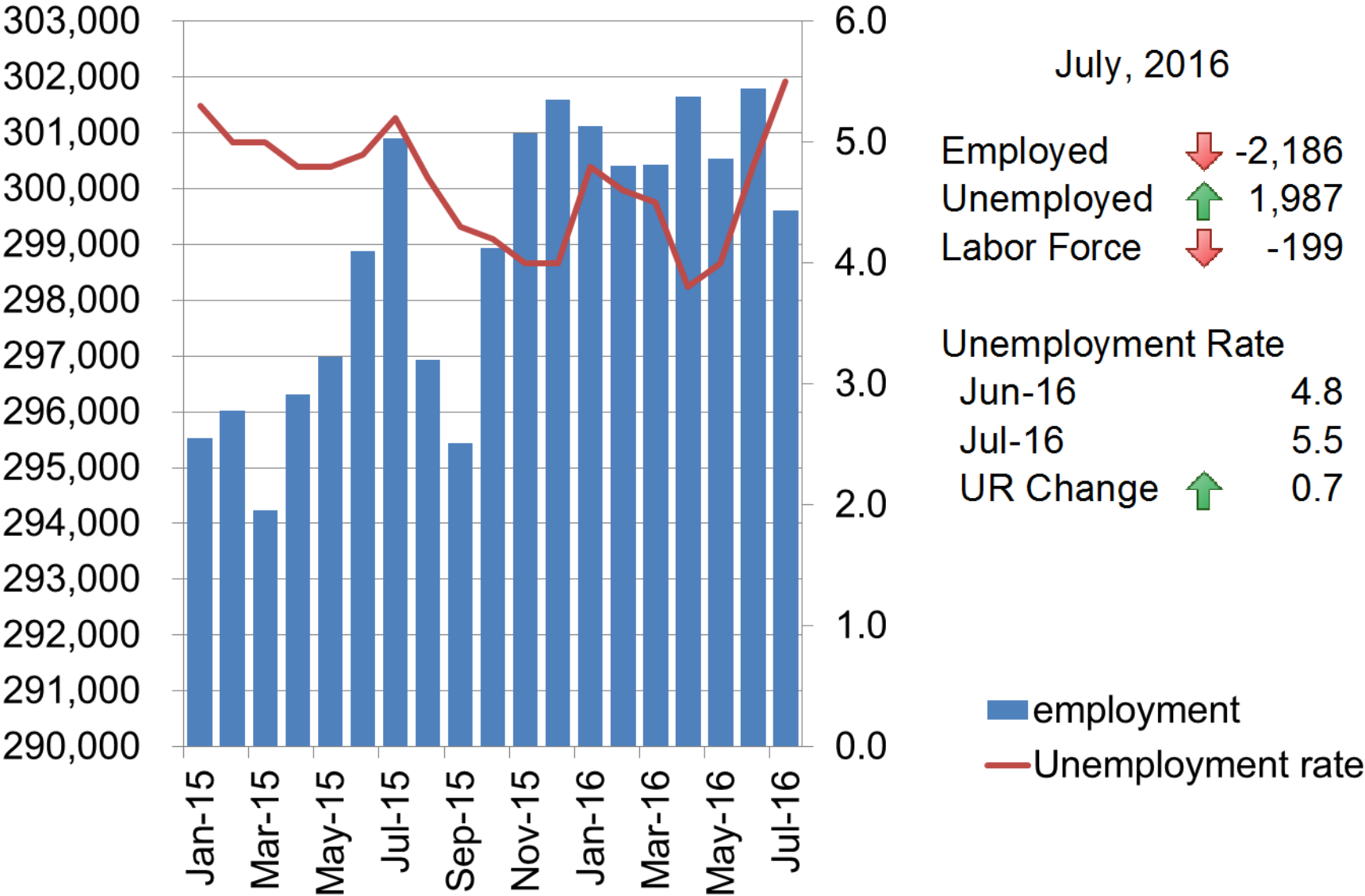
Source: Bureau of Labor Statistics, Not Seasonally Adjusted

Kansas 6-month Employment Situation



Source: Bureau of Labor Statistics, Not Seasonally Adjusted

Wichita Metropolitan Area



July, 2016

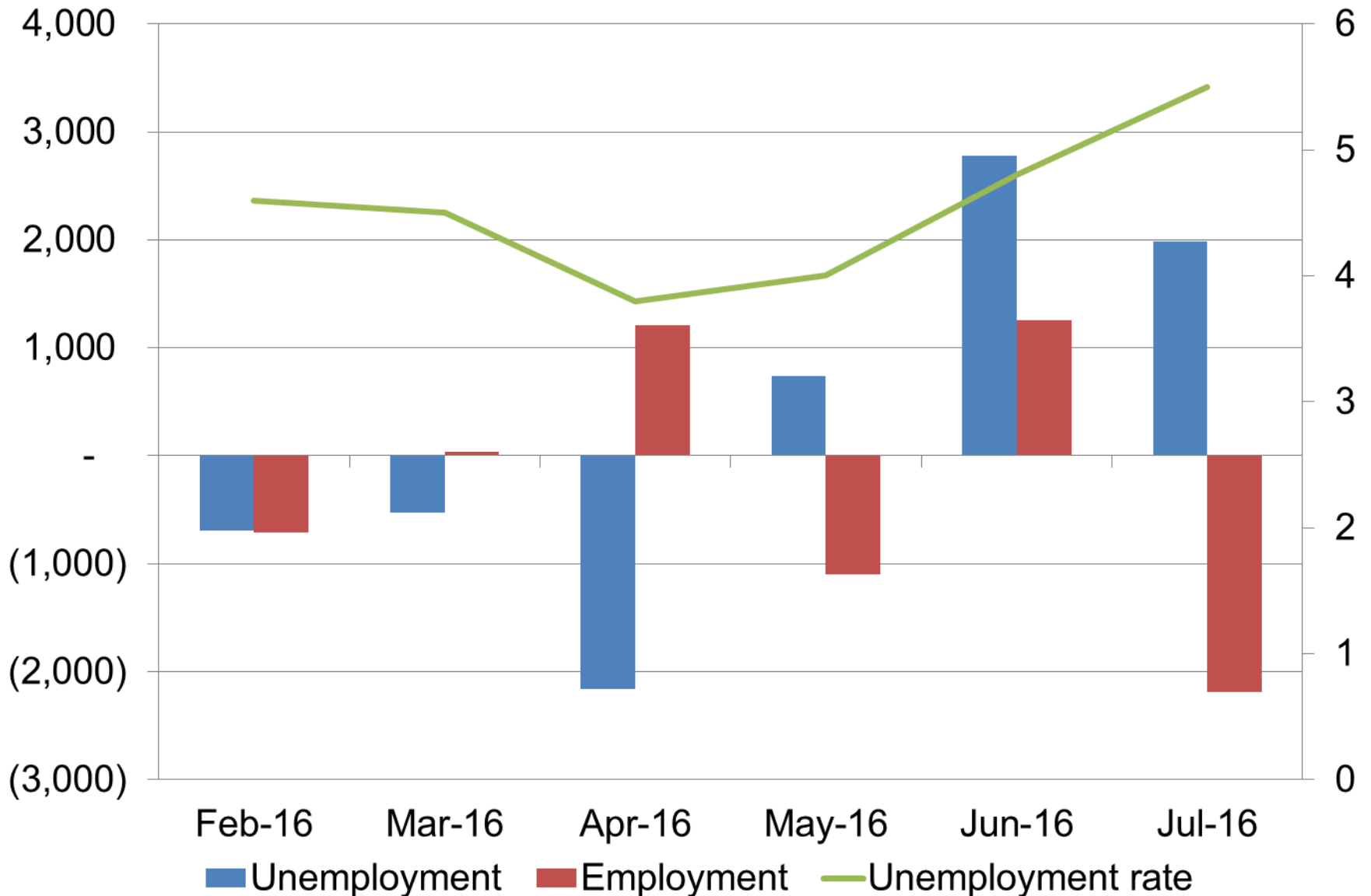
Employed ↓ -2,186
 Unemployed ↑ 1,987
 Labor Force ↓ -199

Unemployment Rate
 Jun-16 4.8
 Jul-16 5.5
 UR Change ↑ 0.7

■ employment
 — Unemployment rate

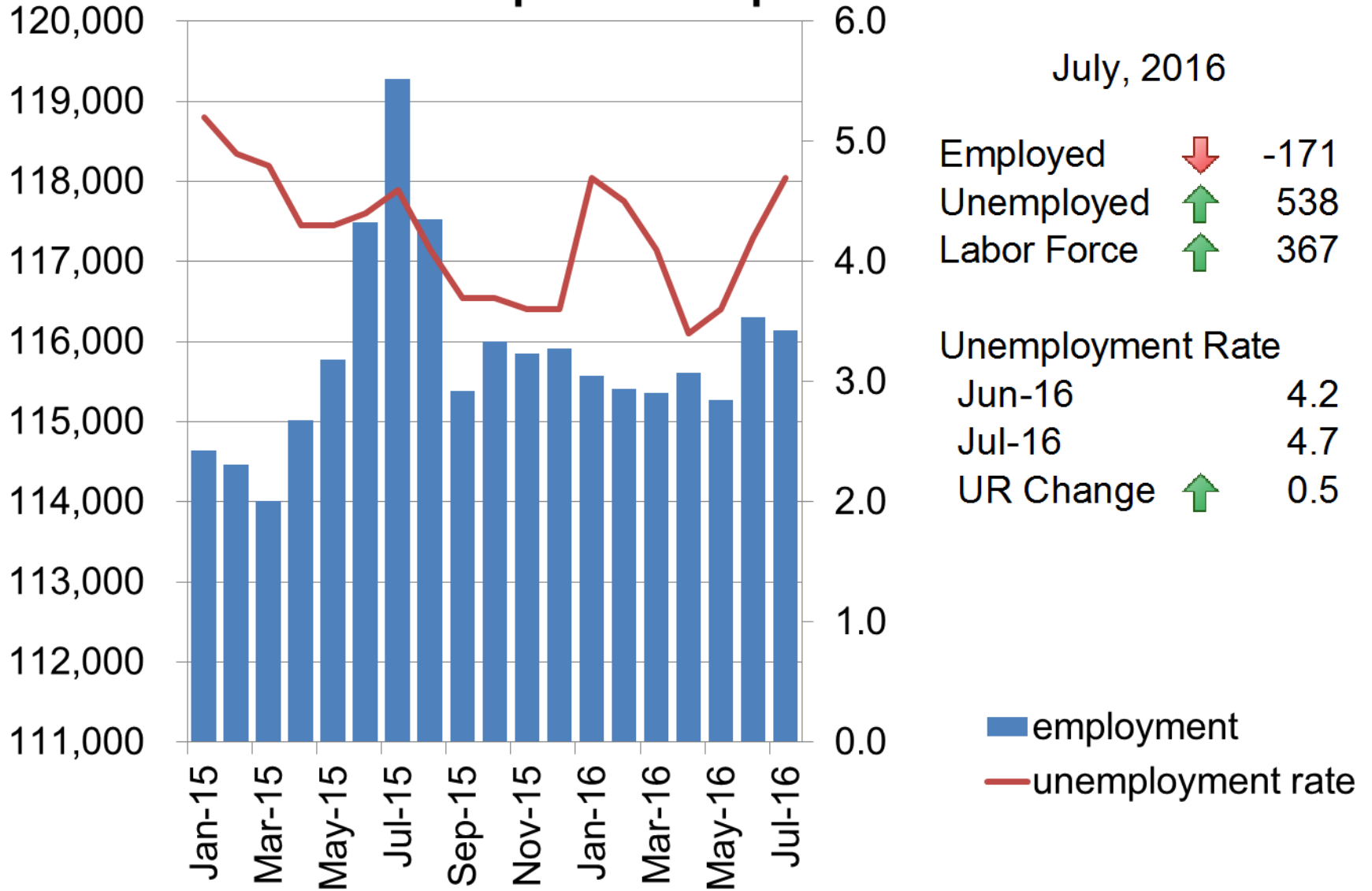
Source: Bureau of Labor Statistics, Not Seasonally Adjusted

Wichita 6-month Employment Situation



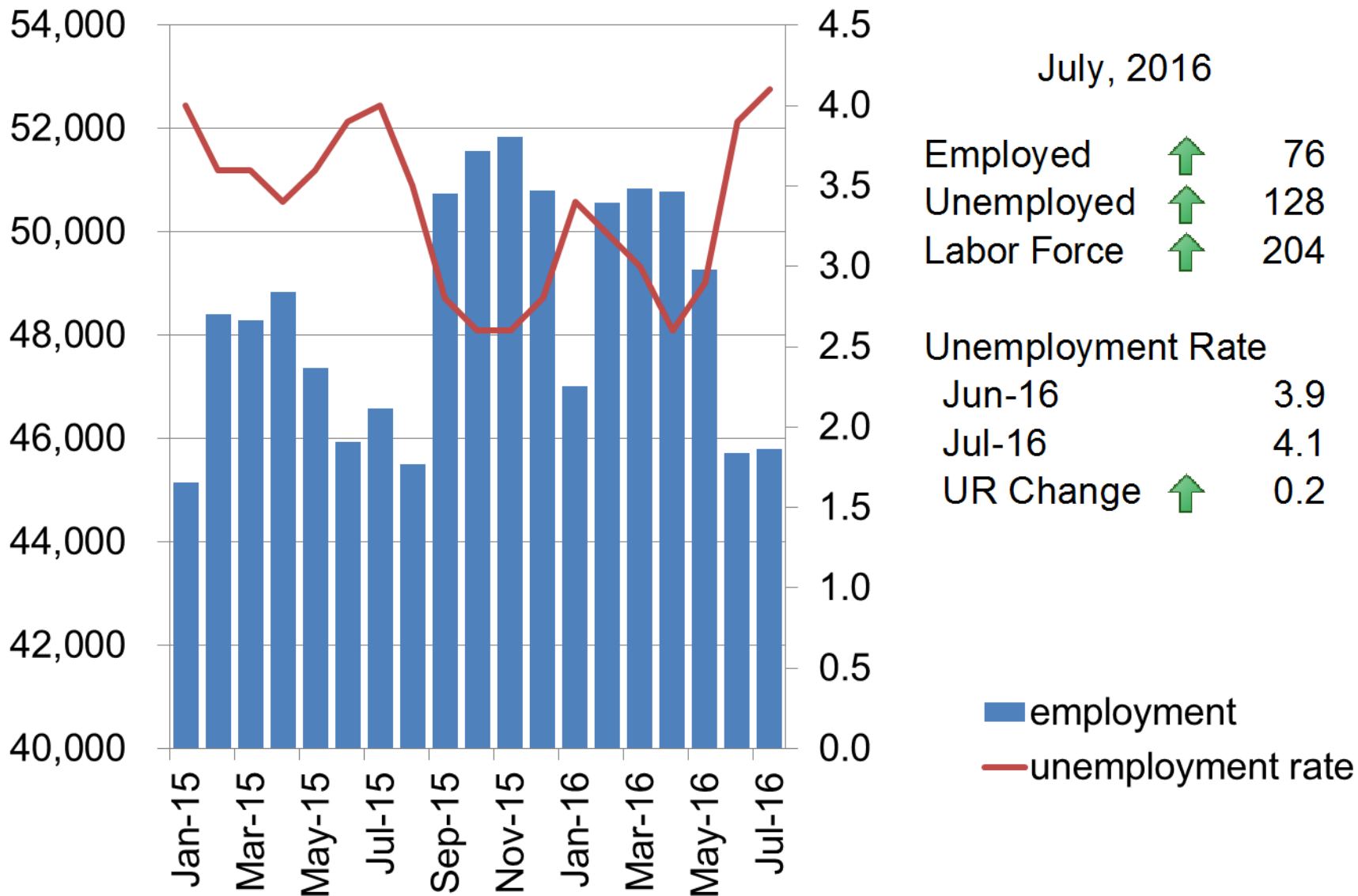
Source: Bureau of Labor Statistics, Not Seasonally Adjusted

Topeka Metropolitan Area



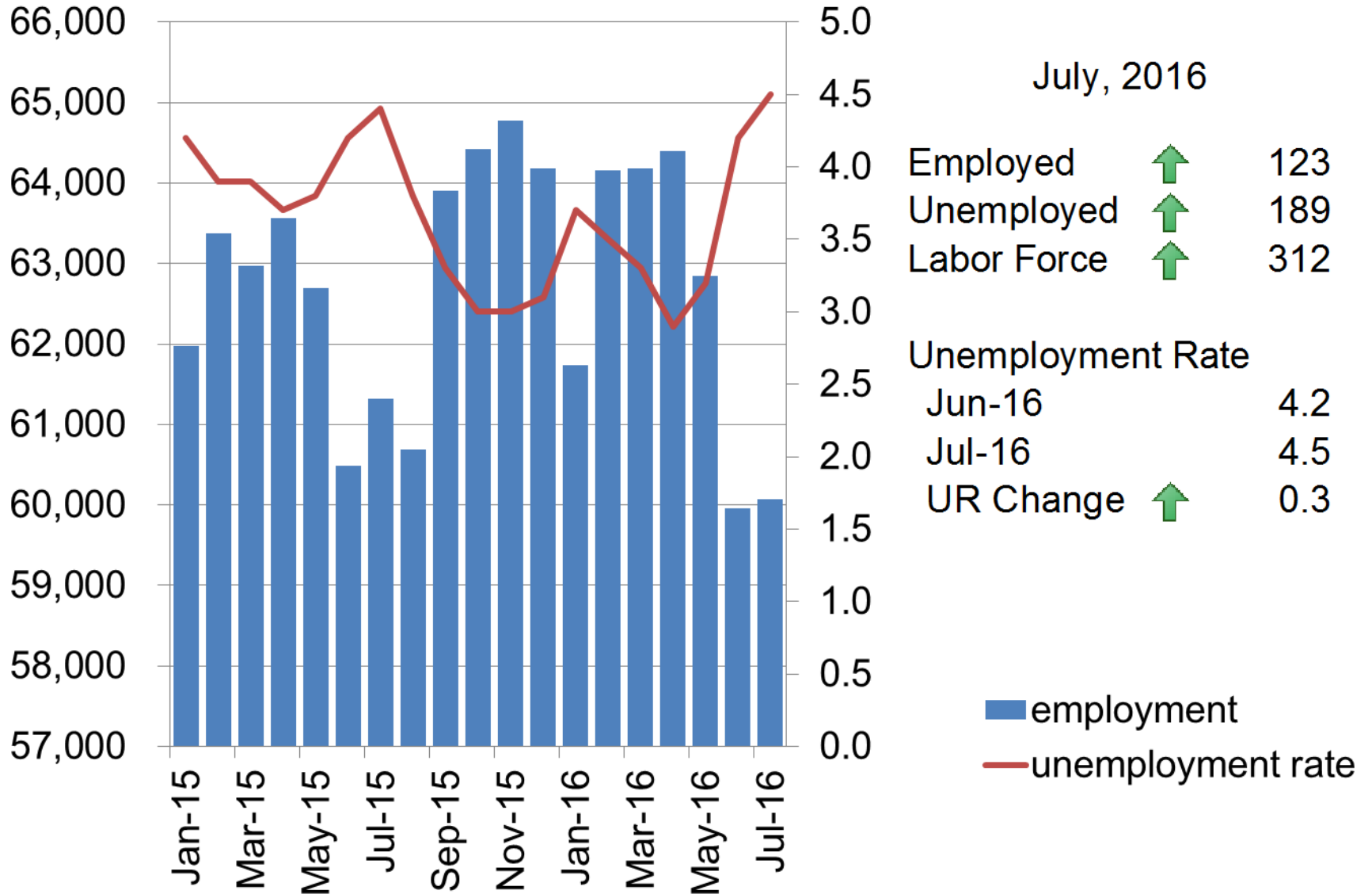
Source: Bureau of Labor Statistics, Not Seasonally Adjusted

Manhattan Metropolitan Area



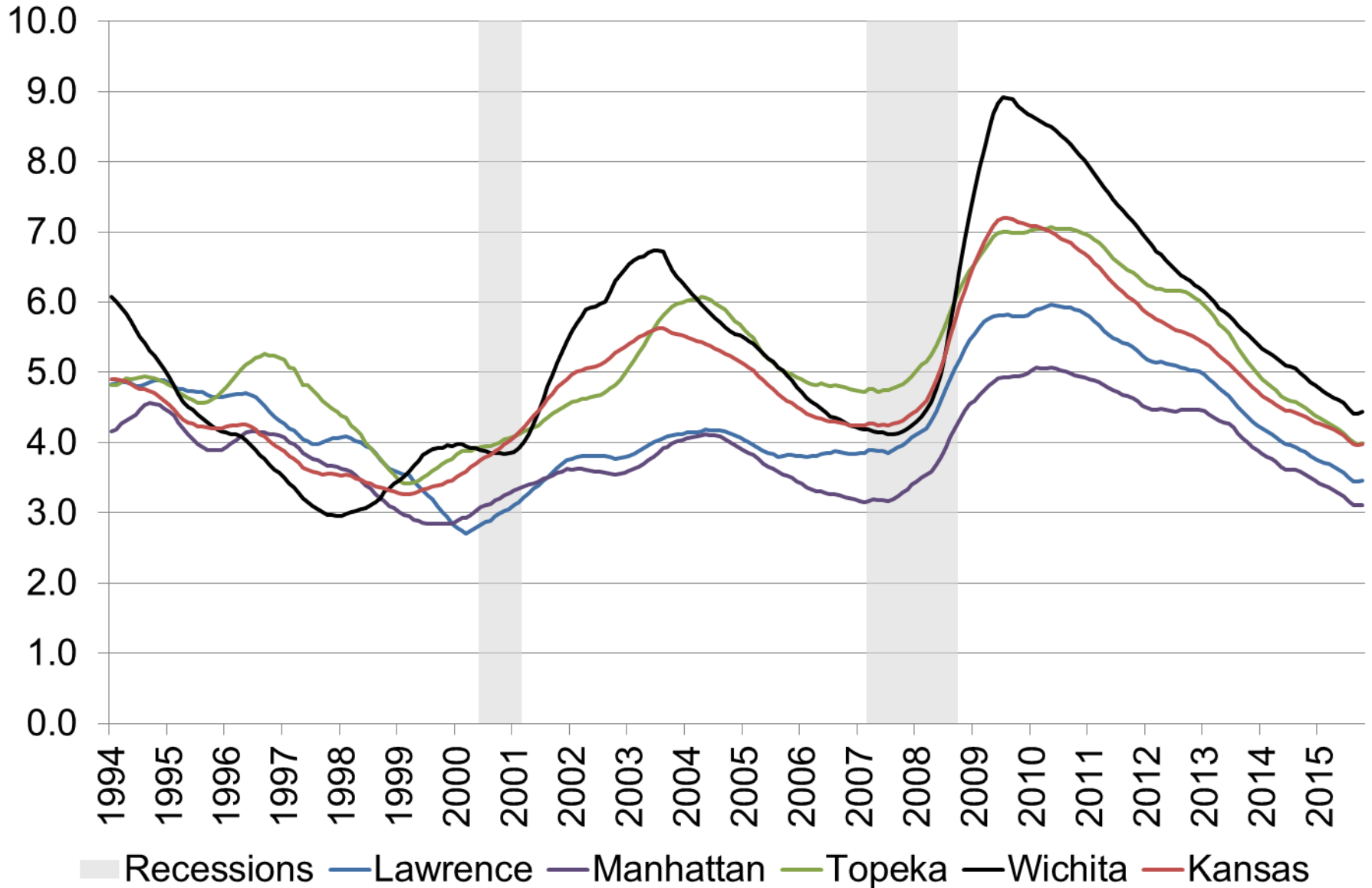
Source: Bureau of Labor Statistics, Not Seasonally Adjusted

Lawrence Metropolitan Area



Source: Bureau of Labor Statistics, Not Seasonally Adjusted

Annual Average Unemployment Rate



Source: Bureau of Labor Statistics, Not Seasonally Adjusted, 12-month moving average

Data Definitions

- **Civilian noninstitutional population:** Persons 16 years of age and older residing in the 50 states and the District of Columbia, who are not inmates of institutions (e.g., penal and mental facilities, homes for the aged), and who are not on active duty in the Armed Forces.
- **Civilian labor force:** All persons in the civilian noninstitutional population classified as either employed or unemployed.
- **Employed persons:** All persons who, during the reference week (week including the twelfth day of the month), (a) did any work as paid employees, worked in their own business or profession or on their own farm, or worked 15 hours or more as unpaid workers in an enterprise operated by a member of their family, or (b) were not working but who had jobs from which they were temporarily absent. Each employed person is counted only once, even if he or she holds more than one job.
- **Unemployed persons:** All persons who had no employment during the reference week, were available for work, except for temporary illness, and had made specific efforts to find employment some time during the 4-week period ending with the reference week. Persons who were waiting to be recalled to a job from which they had been laid off need not have been looking for work to be classified as unemployed.
- **Unemployment rate:** The ratio of unemployed to the civilian labor force expressed as a percent [i.e., 100 times (unemployed/labor force)].

Thank You

For additional information you may contact us

at: (316) 978-3225

or

cedbr@wichita.edu



CEDBR

Center for Economic Development
and Business Research